

Supplementary data for article:

Vujisić, L. V.; Makarov, S. E.; Curcic, B. P. M.; Ilic, B. S.; Tešević, V.; Gođevac, D.; Vučković, I. M.; Curcic, S. B.; Mitić, B. M. Composition of the Defensive Secretion in Three Species of European Millipedes. *Journal of Chemical Ecology* **2011**, *37* (12), 1358–1364.

<https://doi.org/10.1007/s10886-011-0040-3>

2887 Journal of Chemical Ecology

SUPPLEMENTARY INFORMATION

COMPOSITION OF THE DEFENSIVE SECRETION IN THREE EUROPEAN MILLIPEDES (DIPLOPODA, JULIDA, JULIDAE)

Ljubodrag V. Vujisić, Slobodan E. Makarov*, Božidar P. M. Ćurčić, Bojan S. Ilić, Vele V. Tešević,
Dejan M. Gođevac, Ivan M. Vučković, Srećko B. Ćurčić, And Bojan M. Mitić

*Corresponding author

Institute of Zoology, Faculty of Biology, University of Belgrade, Studentski trg 16

11000 Belgrade, Serbia

e-mail: slobodan@bio.bg.ac.rs; tel.: + 381 11 2187 266; Fax: + 381 11 2638 500

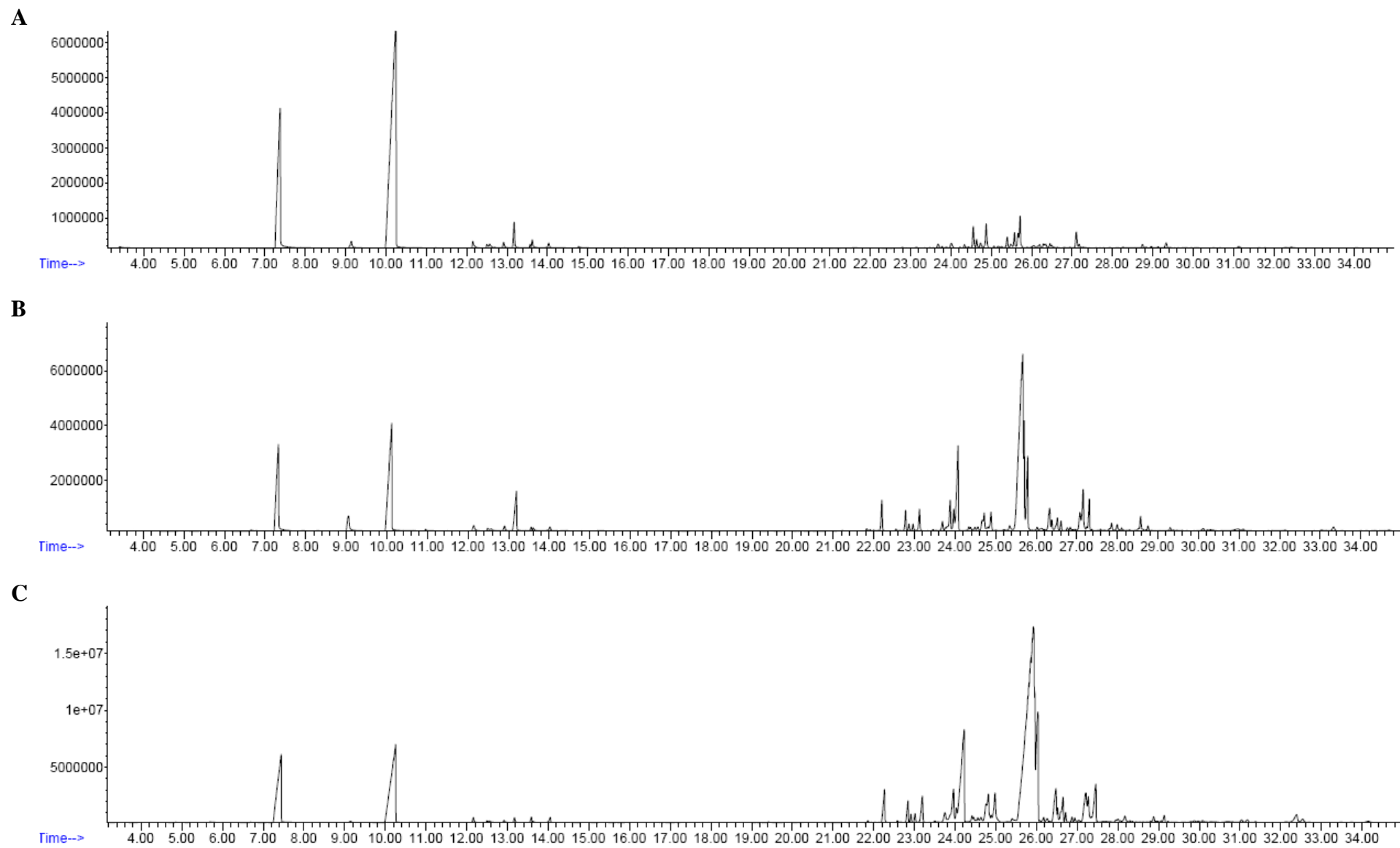


Figure S1. GC-FID chromatograms of whole body extracts in DCM of julid millipede species: *Cylindroiulus boleti* (A), *Leptoiulus trilineatus* (B), *Megaphyllum bosniense* (C).

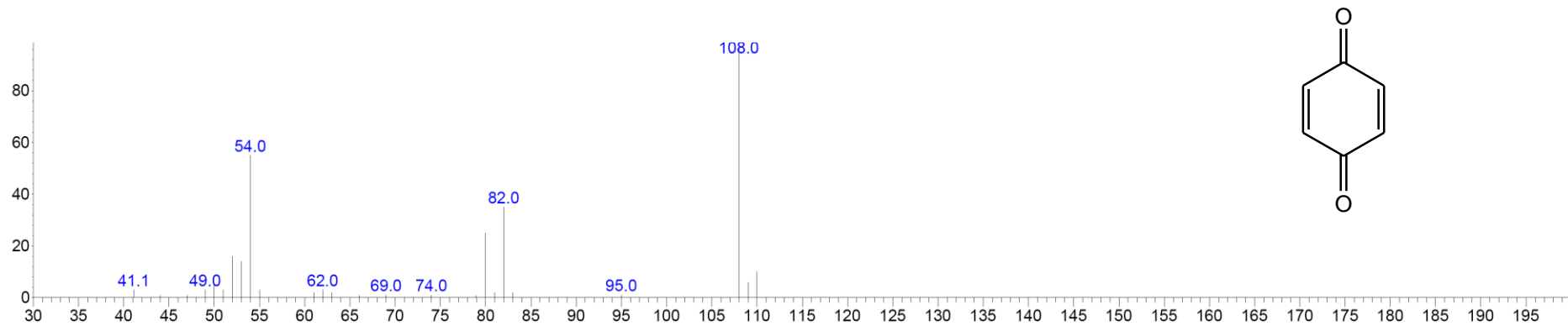


Figure S2. EI MS spectrum of compound I

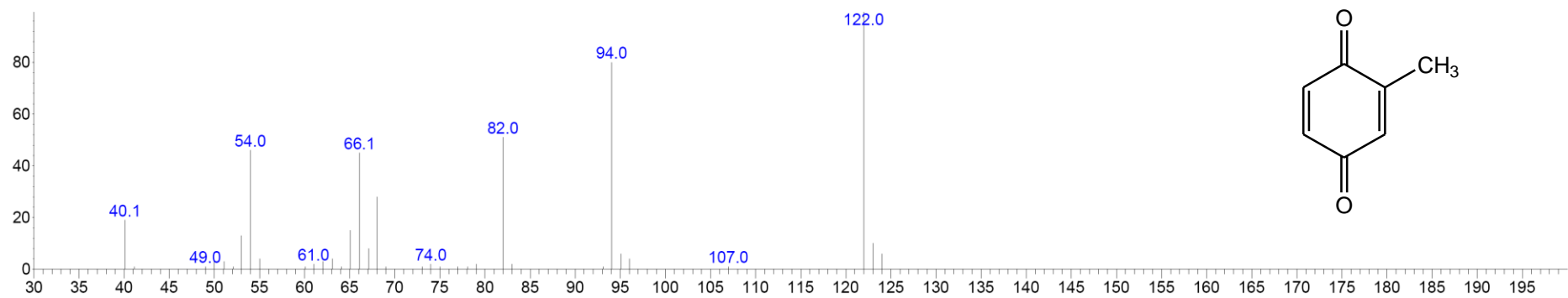


Figure S3. EI MS spectrum of compound II.

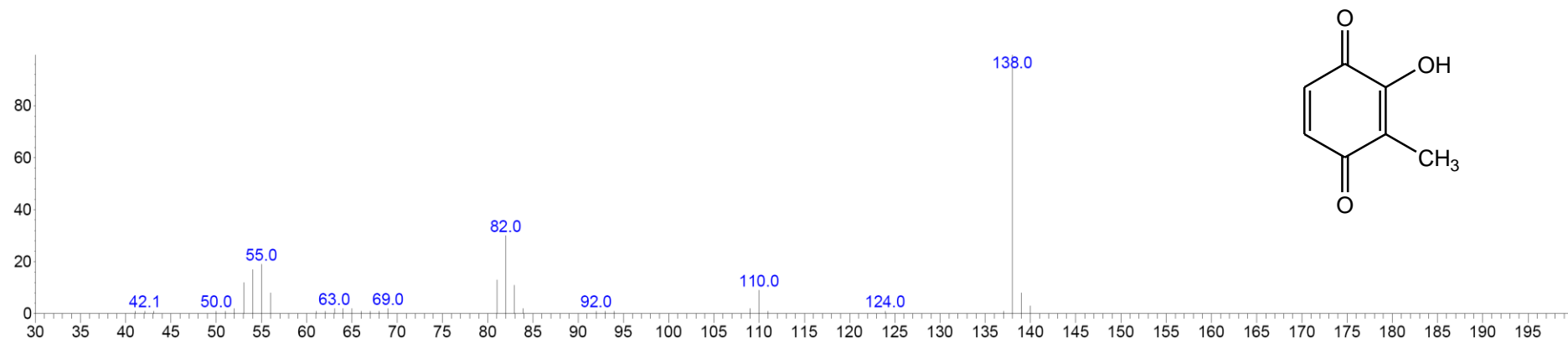


Figure S4. EI MS spectrum of compound III.

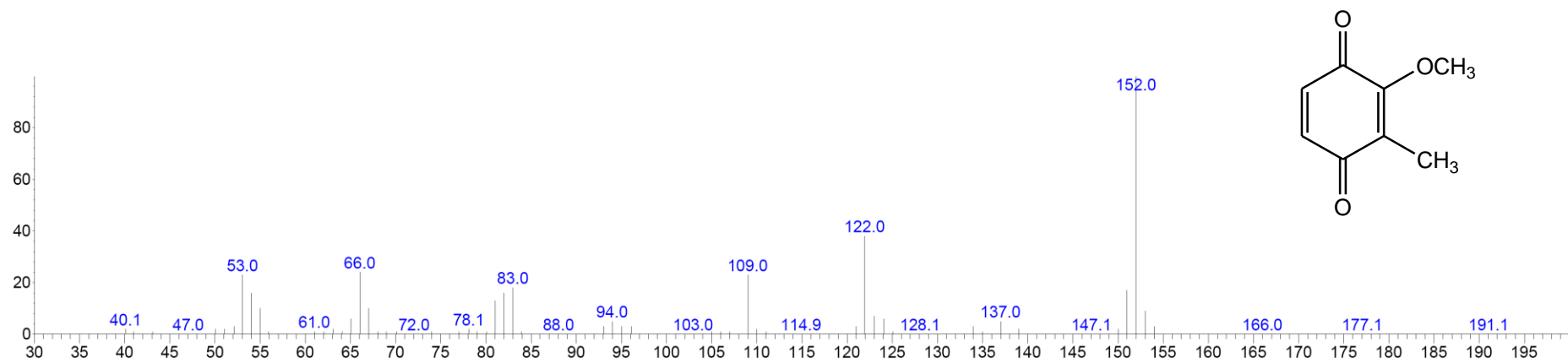


Figure S5. EI MS spectrum of compound IV.

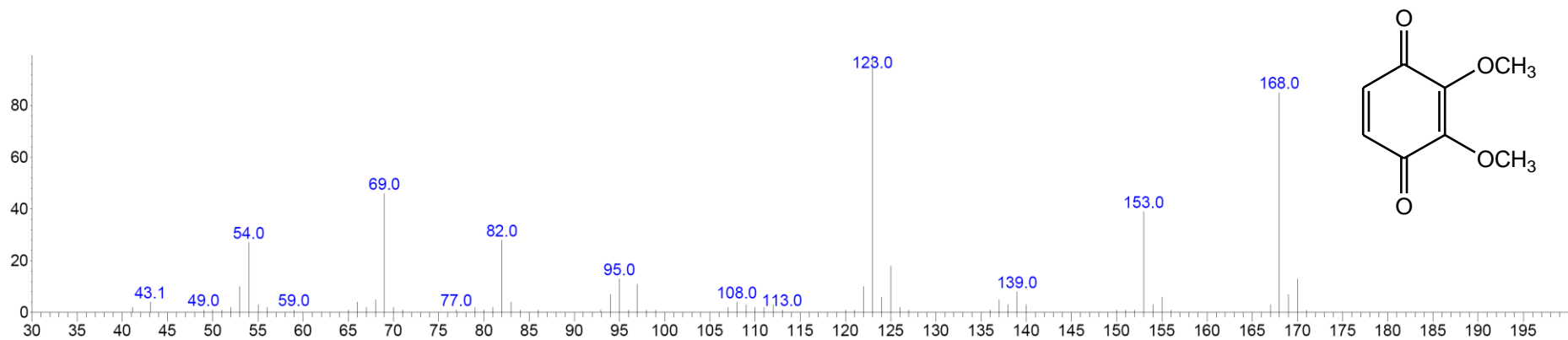


Figure S6. EI MS spectrum of compound V.

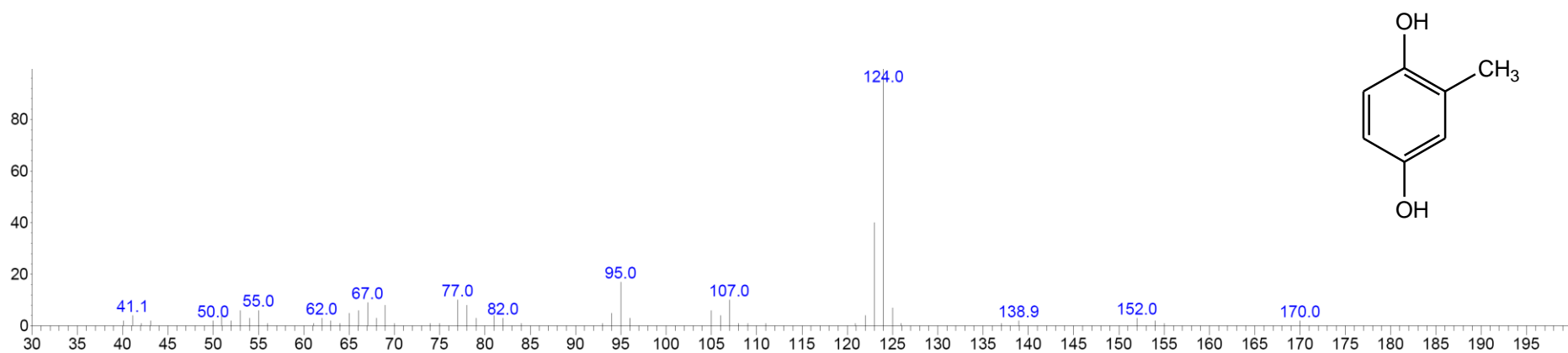


Figure S7. EI MS spectrum of compound VI.

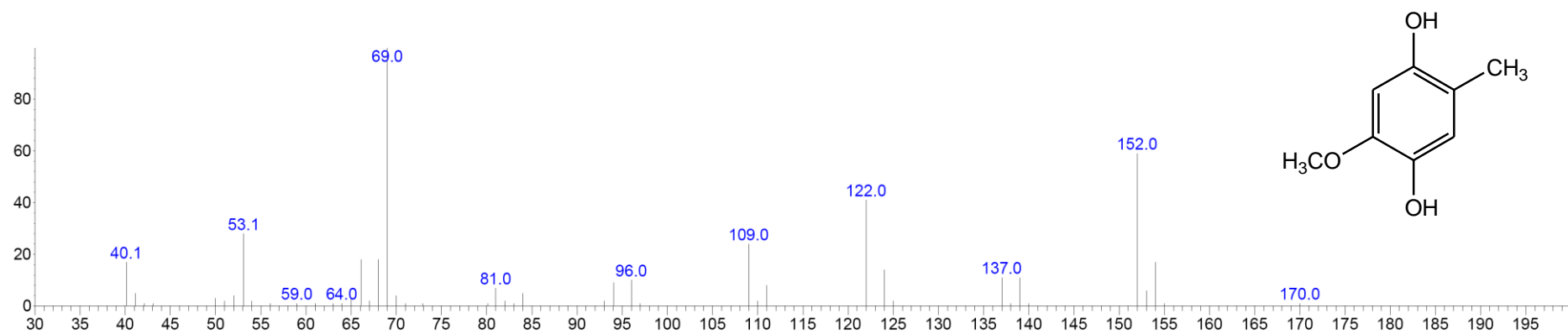


Figure S8. EI MS spectrum of compound VII.

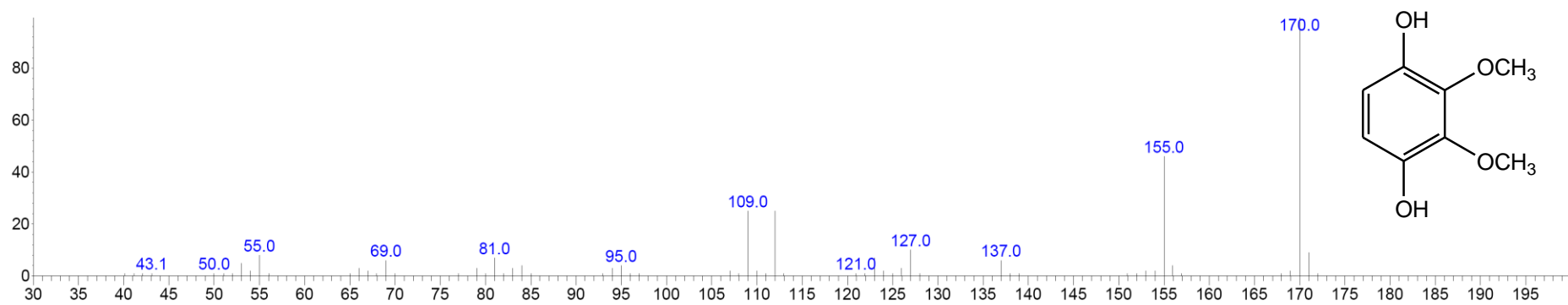


Figure S9. EI MS spectrum of compound VIII.

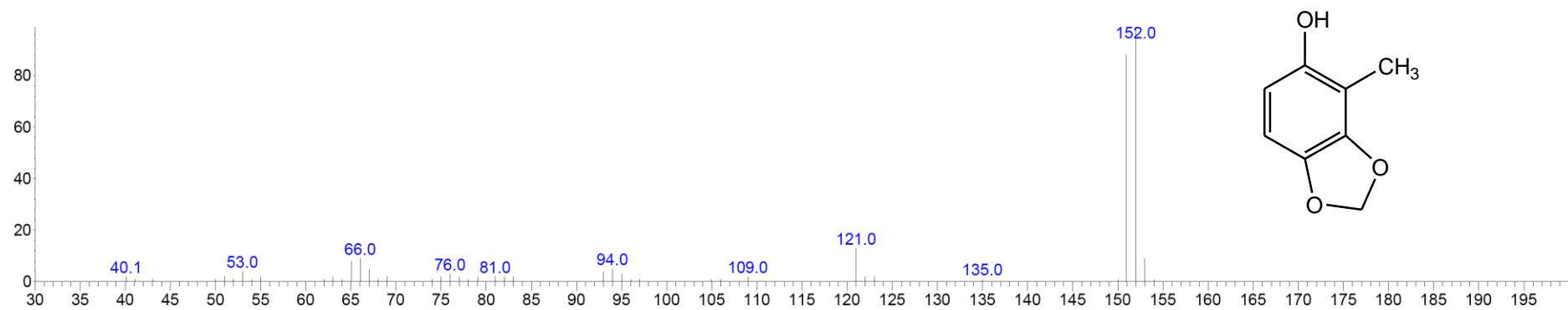


Figure S10. EI MS spectrum of compound IX.

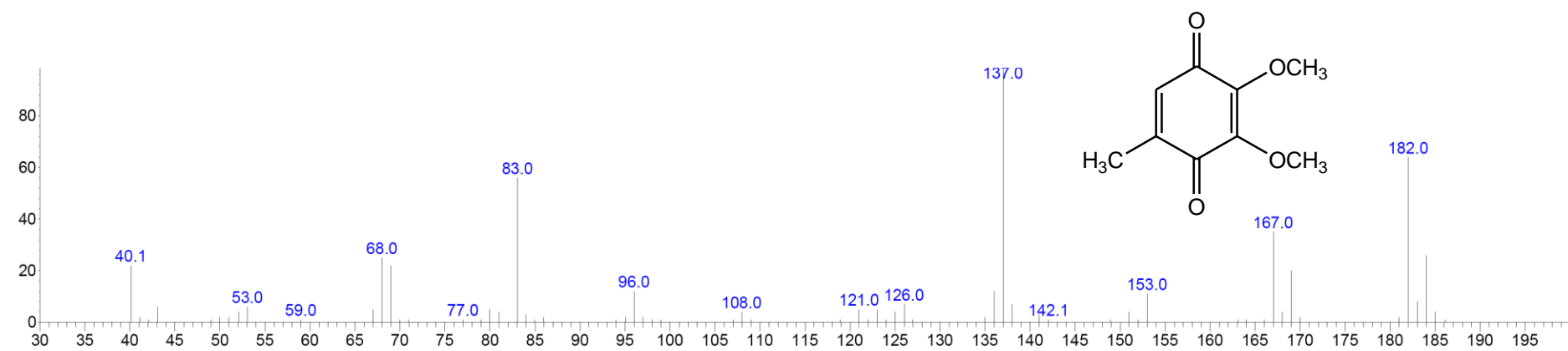


Figure S11. EI MS spectrum of compound X.

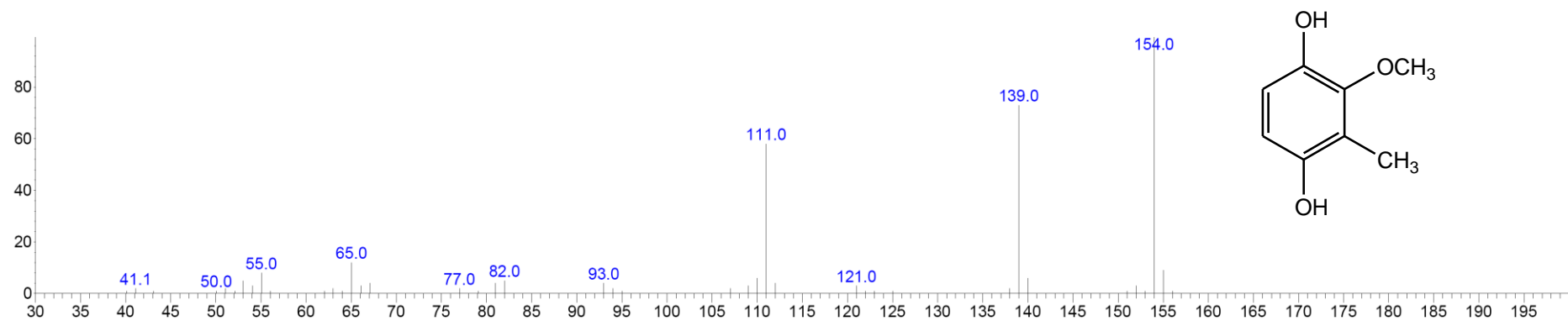


Figure S12. EI MS spectrum of compound XI.

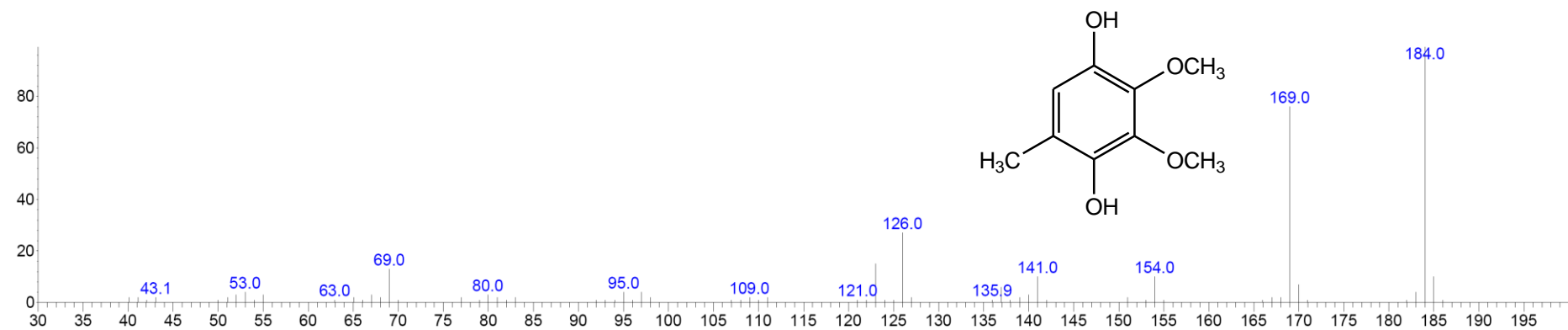


Figure S13. EI MS spectrum of compound XII.

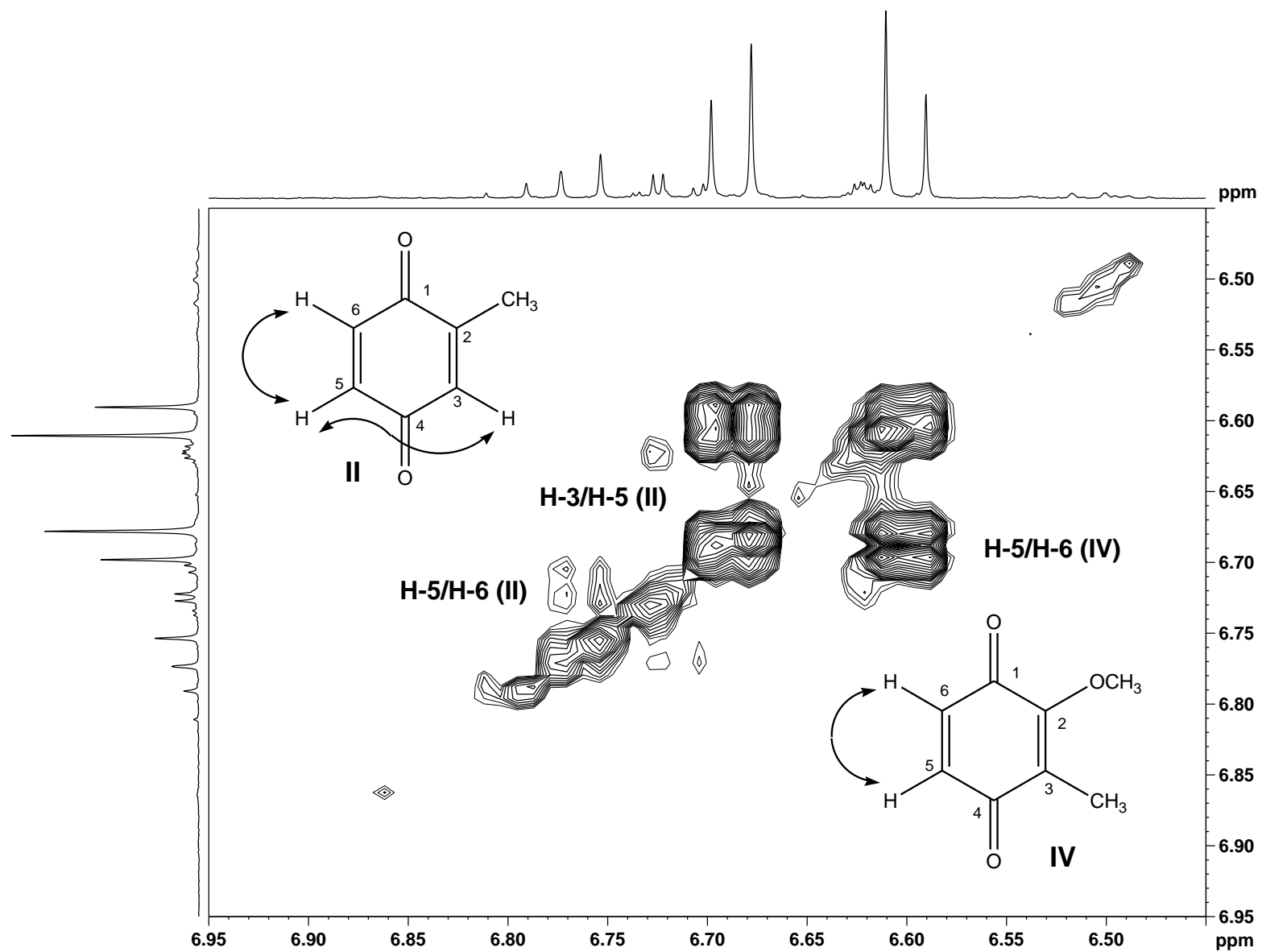


Figure S14. Expansion of COSY spectrum of DCM extract of *M. bosniense*: correlations of aromatic protons of compounds **II** and **IV**.

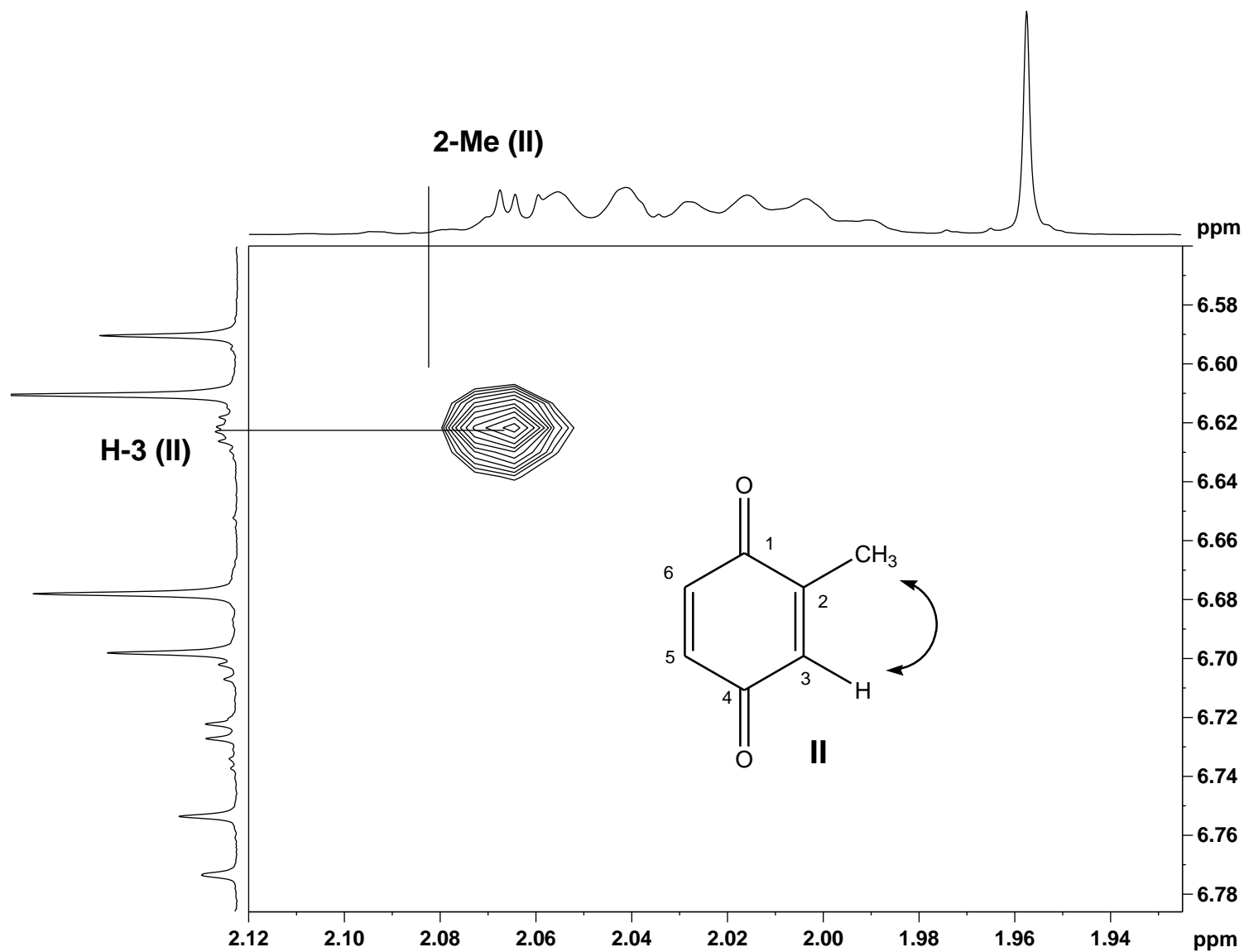


Figure S15. Expansion of COSY spectrum of DCM extract of *M. bosniense*: correlation of -CH₃ and H-3 of compound **II**.

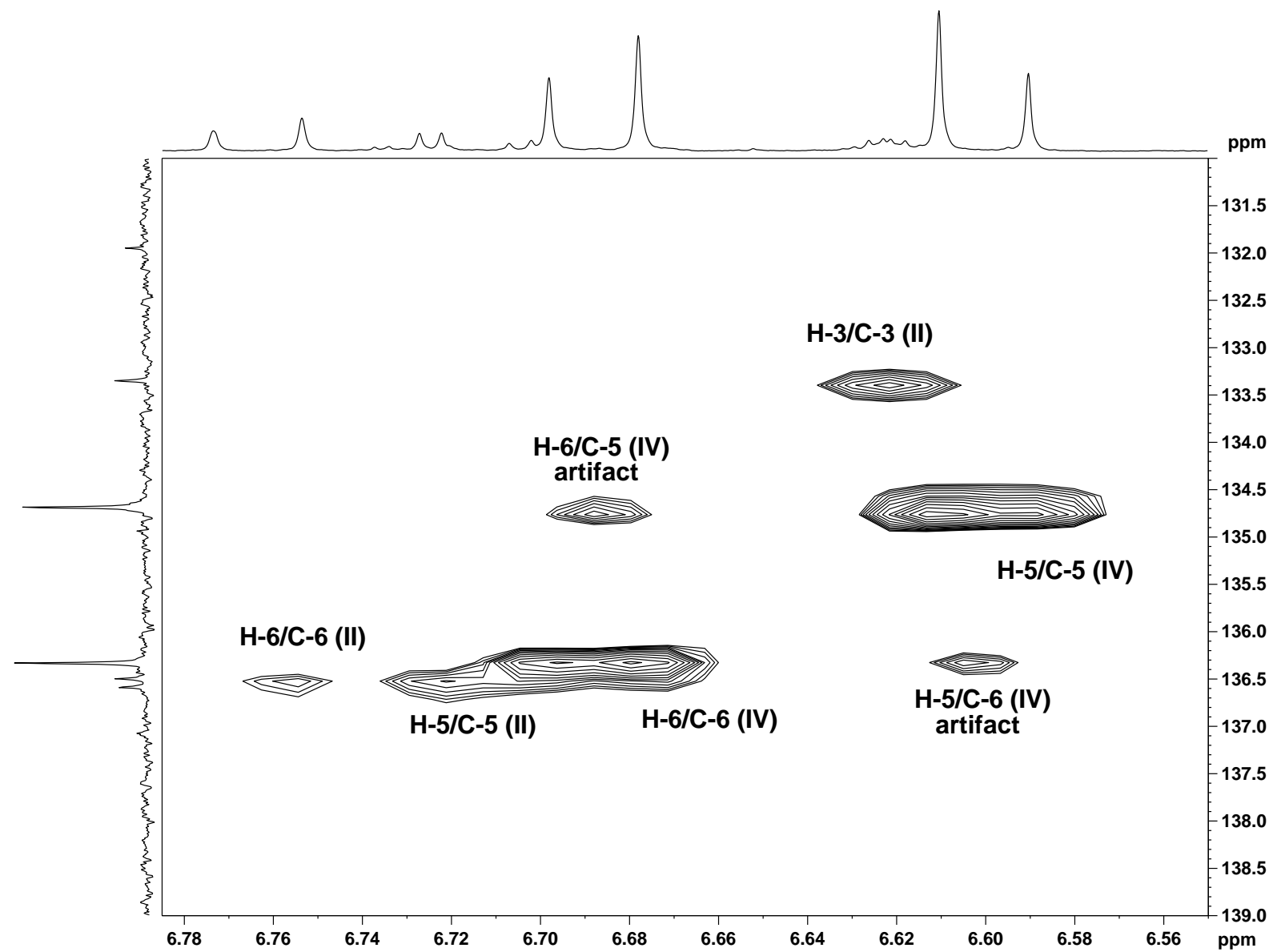


Figure S16. Expansion of HSQC spectrum of DCM extract of *M. bosniense*: aromatic H/C correlations of compounds **II** and **IV**.

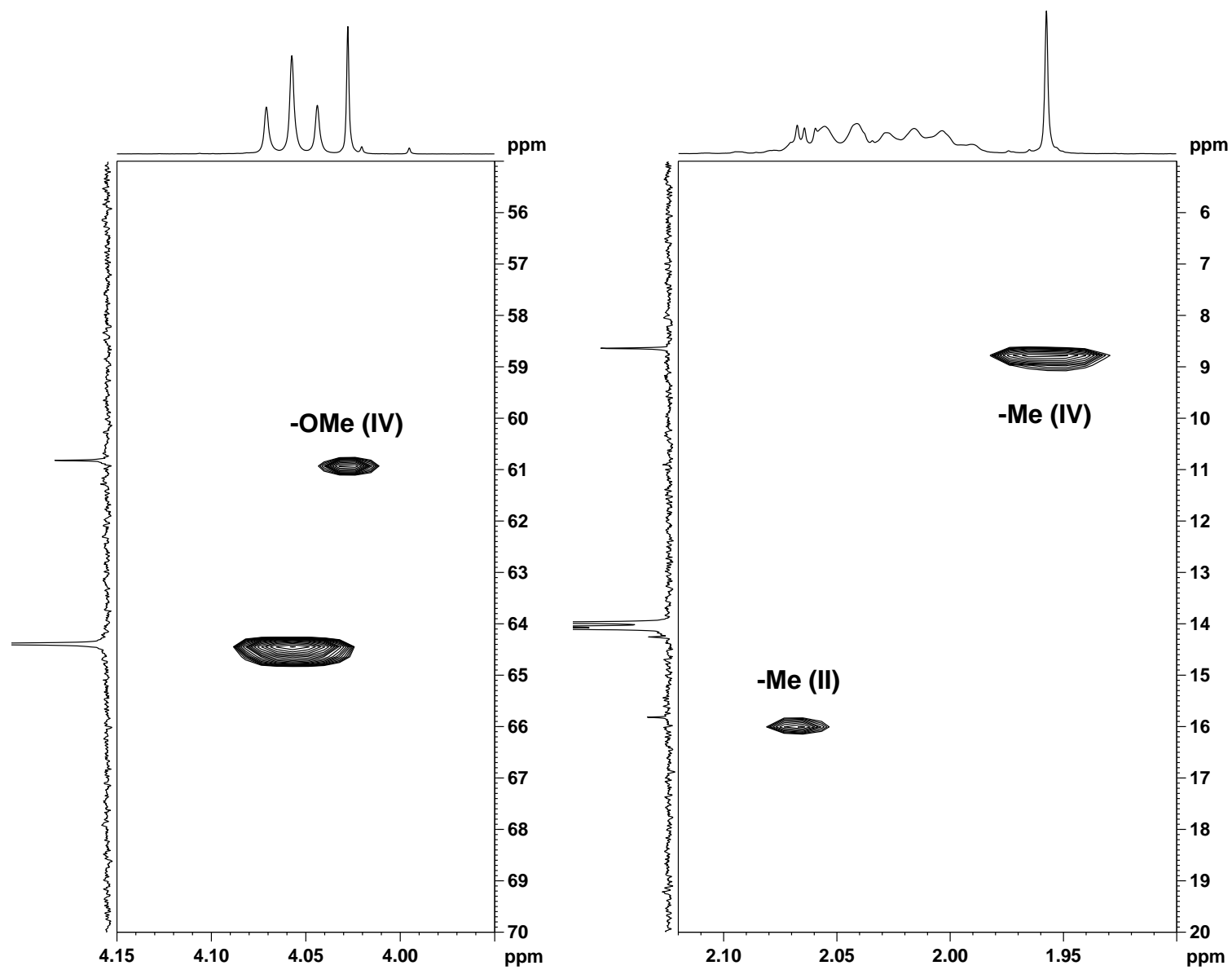


Figure S17. Expansions of HSQC spectrum of DCM extract of *M. bosniense*: -OCH₃ and -CH₃ correlations of compounds **II** and **IV**.

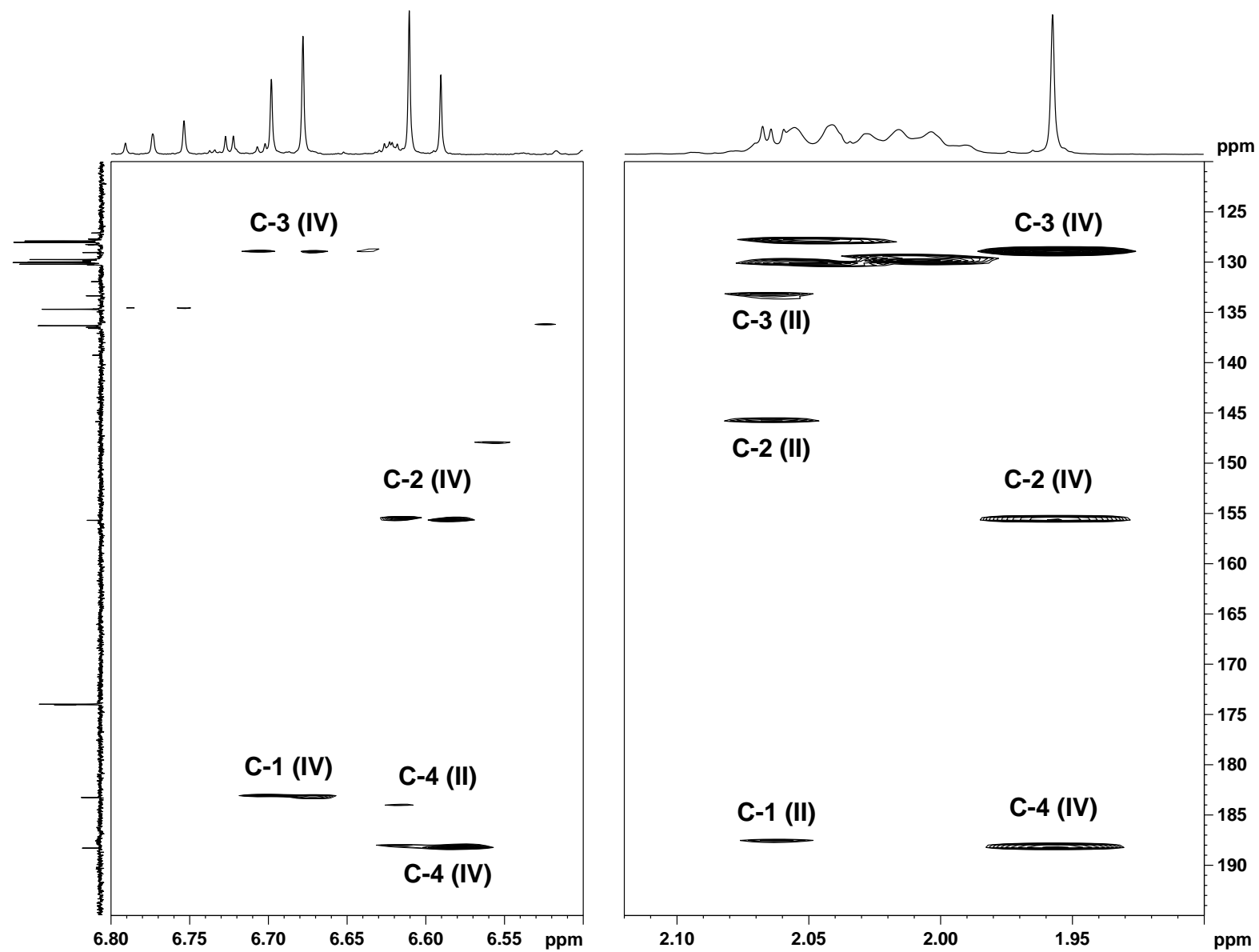


Figure S18. Expansions of HMBC spectrum of DCM extract of of *M. bosniense*: long-range H/C correlations of compounds **II** and **IV**.