

Supplementary material for the article:

Fukushi, K.; Fujita, Y.; Nonogaki, J.; Tsujimoto, J.-I.; Hattori, T.; Inui, H.; Beškoski, V. P.; Hotta, H.; Hayashi, M.; Nakano, T. Capillary Zone Electrophoresis Determination of Fluoride in Seawater Using Transient Isotachophoresis. *Analytical and Bioanalytical Chemistry* **2018**, *410* (6), 1825–1831. <https://doi.org/10.1007/s00216-017-0838-0>

Analytical and Bioanalytical Chemistry

Electronic Supplementary Material

Capillary zone electrophoresis determination of fluoride in seawater using transient isotachopheresis

Keiichi Fukushi, Yuki Fujita, Junpei Nonogaki, Jun-ichi Tsujimoto, Takanari Hattori,
Hideyuki Inui, Vladimir P. Beškoski, Hiroki Hotta, Mitsuru Hayashi, Takeshi Nakano

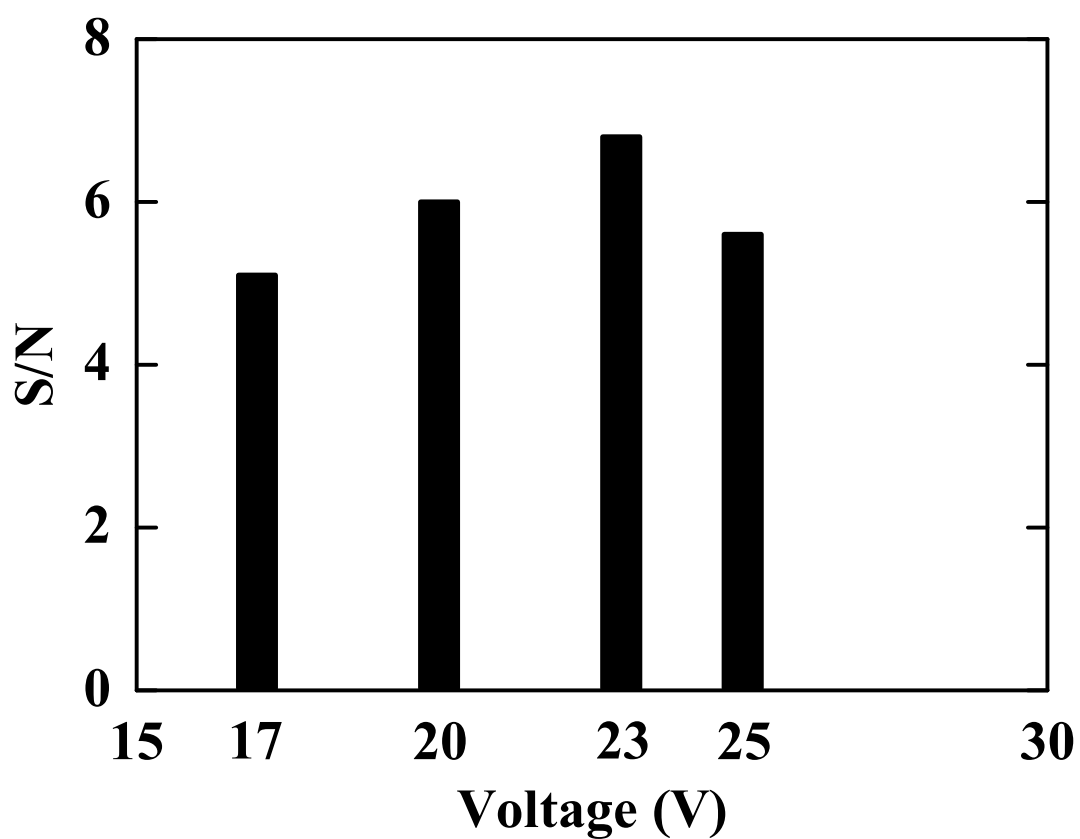


Fig. S1 Effect of applied voltage on S/N for F⁻. Electrophoretic conditions: capillary, 87.4 cm total length (75 cm effective length) and 75 μm i.d. (375 μm o.d.); BGE, 5 mM 2,6-pyridinedicarboxylic acid (PDC) adjusted to pH 3.5 with 1 M NaOH containing 0.03% m/v hydroxypropyl methylcellulose (HPMC); voltage, 17–25 kV with the sample inlet side as the cathode; wavelength for detection, 200 nm; sample, 0.14 mg/L F⁻/ten-fold diluted artificial seawater (ASW); vacuum injection period, 3 s (ca. 152 nL); two or three determinations for each voltage.

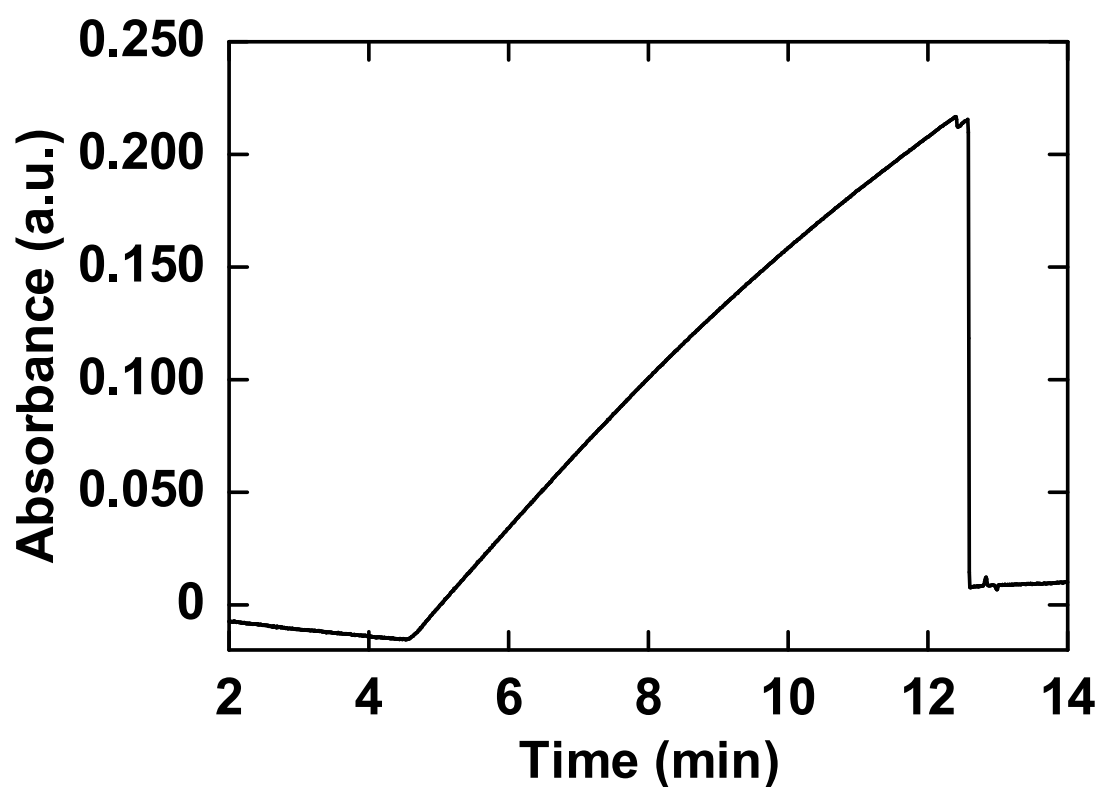


Fig. S2 Whole electropherogram of the surface seawater sample 11 (ten-fold diluted) in Table 2. Electrophoretic conditions: capillary, 87.4 cm total length (75 cm effective length) and 75 μm i.d. (375 μm o.d.); BGE, 5 mM 2,6-pyridinedicarboxylic acid (PDC) adjusted to pH 3.5 with 1 M NaOH containing 0.03% m/v hydroxypropyl methylcellulose (HPMC); voltage, 23 kV with the sample inlet side as the cathode; wavelength for detection, 200 nm; sample, ten-fold diluted seawater 11 (Table 2); vacuum injection period, 5 s (ca. 254 nL).