

Supplementary data for the article:

Blažić, M.; Balaž, A. M.; Prodanović, O.; Popović, N.; Ostafe, R.; Fischer, R.; Prodanović, R. Directed Evolution of Cellobiose Dehydrogenase on the Surface of Yeast Cells Using Resazurin-Based Fluorescent Assay. *Applied Sciences (Switzerland)* **2019**, *9* (7). <https://doi.org/10.3390/app9071413>

## Supplementary Material

# Directed evolution of cellobiose dehydrogenase on the surface of yeast cells using resazurin based fluorescent assay

Marija Blažić <sup>1</sup>, Ana Marija Balaž <sup>1</sup>, Olivera Prodanović <sup>2</sup>, Nikolina Popović <sup>3</sup>, Raluca Ostafe <sup>4</sup>, Rainer Fischer <sup>5,6</sup> and Radivoje Prodanović <sup>3,\*</sup>

<sup>1</sup> Institute of Chemistry, Technology and Metallurgy, University of Belgrade, Njegoševa 2, 11000 Belgrade, Serbia; marijabbl@gmail.com (M.B.); anam@chem.bg.ac.rs (A.M.B.)

<sup>2</sup> Institute for Multidisciplinary Studies, University of Belgrade, Kneza Višeslava 1, 11030 Belgrade, Serbia; oliverap@imsi.rs

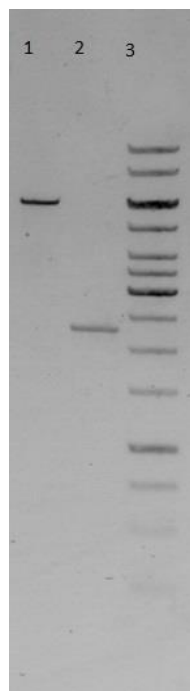
<sup>3</sup> University of Belgrade-Faculty of Chemistry, Studentski trg 12, 11000 Belgrade Serbia; nikolina@chem.bg.ac.rs

<sup>4</sup> Molecular Evolution Protein Engineering and Production facility (MEPEP), Purdue University, 207 S. Martin Jischke Dr., West Lafayette, IN 47907, USA; rostafe@purdue.edu

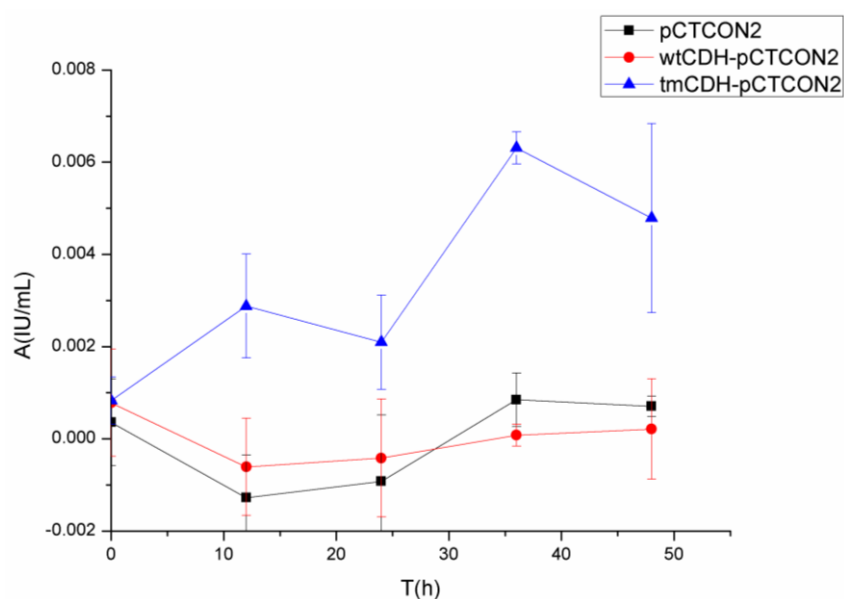
<sup>5</sup> Indiana Bioscience Research Institute, Single Cell Analytics Center, 1345 W. 16th St. Suite 300, Indianapolis, IN 46202, USA; rfischer@indianabiosciences.org

<sup>6</sup> Institute of Molecular Biotechnology, RWTH Aachen University Worringerweg 1, 52074 Aachen, Germany,

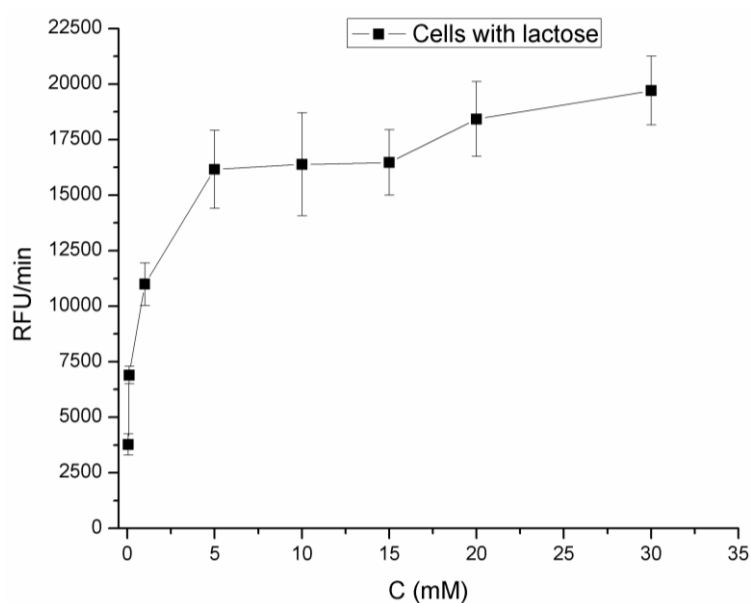
\* Correspondence: rprodano@chem.bg.ac.rs; Tel.: +381-11-333-6660



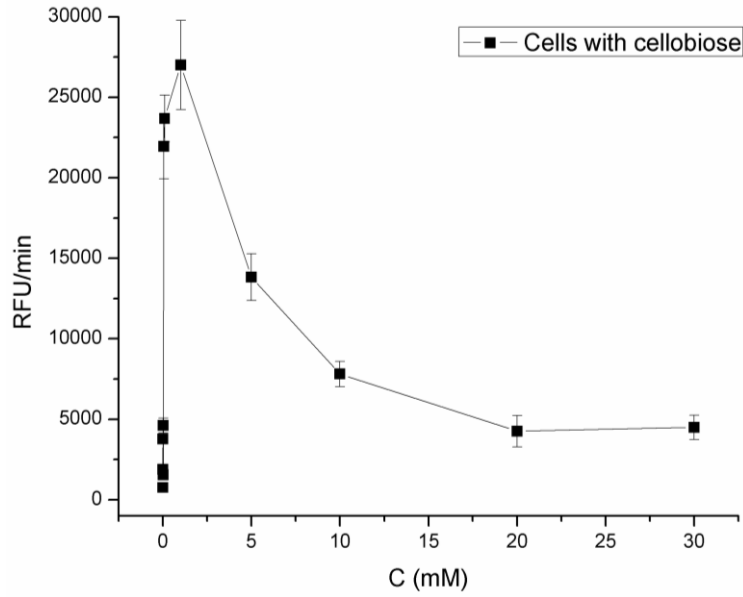
**Figure S1.** DNA electrophoresis on 0.6% agarose gel. Samples: (1) Empty pCTCON2 vector, (2) wtCDH PCR for pCTCON2, and (3) Molecular markers.



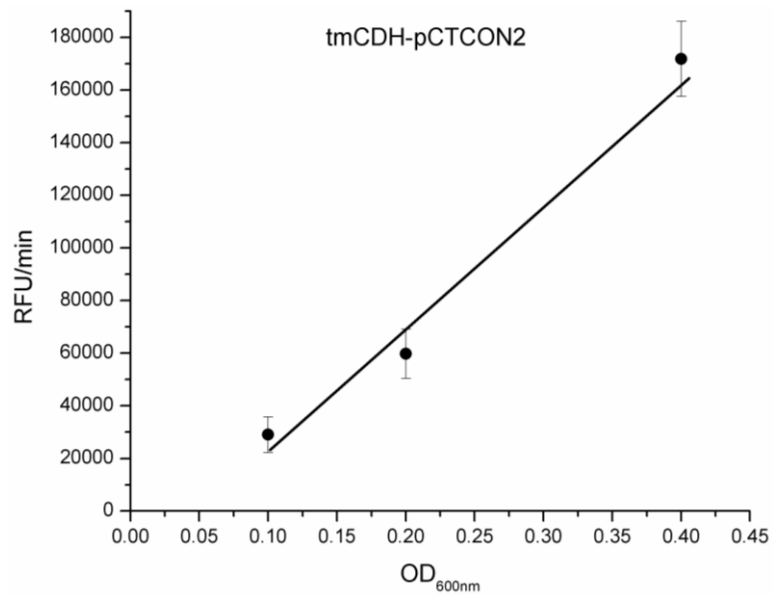
**Figure S2.** Fermentation graph after galactose induction at 25 °C. Samples were EBY100 cells transformed with empty pCTCON2 vector, cells transformed with wtCDH-pCTCON2 and cells transformed with tmCDH-pCTCON2. Activity was measured with DCIP (0.3 mM), lactose (30 mM) in sodium acetate buffer (0.1 M, pH 4.5). All measurements were done in triplicate.



**Figure S3.** Dependence of fluorescence slope in time with lactose concentration. Resazurin (0.1 mM), sodium phosphate (0.1 M; pH 6), EBY100 cells with tmCDH (0.1 OD<sub>600nm</sub>) with range of lactose concentration (0.05–30 mM), assay measured at ex/em 540/590 nm. All measurements were done in triplicate.



**Figure S4.** Dependence of fluorescence slope in time with cellobiose concentration. Resazurin (0.1 mM), sodium phosphate (0.1 M; pH 6), EBY100 cells with tmCDH (0.1 OD<sub>600nm</sub>) with range of cellobiose concentration (0.001–30 mM), assay measured at ex/em 540/590 nm. All measurements were done in triplicate.



**Figure S5.** Dependence of fluorescence signal (RFU/min) on OD at 600 nm of yeast cells expressing cellobiose dehydrogenase. Relative fluorescence units (RFU) at excitation/emission (ex/em) wavelengths of 540/590 nm. All measurements were done in triplicate.

**Table S1.** Cellobiose dehydrogenase synthetic gene sequence (U46081.1).

```
ATGAGATTCCTTCAATTTTTACTGCTGTTTTATTTCGCAGCATCCTCCGATTAGCTGCTCCAGTCAAACTACAACA
GAAGATGAAACGGCACAAATTCGGGCTGAAGCTGTCATCGGTTACTCAGATTTAGAAGGGGATTCGATGTTGCTGT
TTTGCCATTTTCCAACAGCACAAATAACGGGTATTGTTTATAAAATACTACTATTGCCAGCATTGCTGCTAAAGAAG
AAGGGGTATCTCTCGAGAAAAGAGAGGCTGAAGCTCAGAGTGCCTCACAGTTTACCGACCCTACCACAGGATTCCA
GTTCACTGGTATCACCGACCCTGTTTCATGACGTGACCTACGGCTTCGTTTTCCCCCTCTGGCCACCTCCGGAGCGCA
ATCCA CTGAGTTCATCGGAGAGGTTGTTGCCCCATCGCATCAAATGGATTGGTATTGCCCTCGGTGGCGCCATGA
ACAACGACCTGCTACTTGTGGCTGGGCCAACGGCAACCAAATTGTTTCTCCTCACTCGCTGGGCTACTGGCTATGTA
CAGCCGACTGCATATACGGGAACTGCCACTTTGACAACACTCCCTGAGACAACCATCAACTCCACGCACTGGAAGT
GGGTCTCAGGTGTCAGGGCTGCACTGAGTGAACAATGGCGGCGGAATCGACGTCCTAGCCAGGGCGTTCTGGC
GTGGGCATTCTCAACGTCGCCGTCGACGACCCCTCCGACCCGAGAGTACCTTCAGCGAGCACACCGACTTCGGC
TTCTTCGGAATTGACTACTCGACCGCGCACAGCGCCAACTACCAGAACTACCTTAATGGCGACTCCGGCAACCCTA
CGACCAGGACCAAGCCACAAGCAGCAGCTCAGTACGACTGGACCCACTGTTTCTGCTACACCTTACGA
TTACATCATCGTCGGTGTGGTCTGGCGGTATCATTGCAGCTGATCGTCTGTCGGAGGCTGGCAAGAAGGTTCTCT
TCTCGAGCGGGTGGCCCTAGCACCAAGCAGACCGGTGGAACGTATGTCGCTCCATGGGCTACTAGCAGTGGTCTA
ACGAAGTTCGATATCCCGGACTGTTTCGAGTCTTGTTCCTGATTCCAACCCCTTCTGGTGGTGAAAGACATCAC
AGTCTTCGCTGGTTGCCTGGTGGCGGGTACTTCGGTCAACGGAGCTCTCTACTGGTACCCTAACGACGGCGACT
TCTCTCGAGCGTTGGTTGGCCAAGCAGCTGGACCAACCACGCCCCGTACACGAGCAAGCTTTCGCTCTGCTCCCC
AGTACGGACCACCCTTCGACTGATGGCCAGCGCTACCTTGAGCAATCATTCAACGTCGTGTCTCAACTTCTCAAAGG
CCAAGGCTACAACCAGGCCACCATCAACGACAACCCCAACTACAAGGACCAGTCTTCGGCTACAGCGCATTCTGA
TTTCTTAACGGCAAGCGTGCTGGTCCAGTCGCCACCTACCTCCAGACGGCATTGGCTCGCCCCAACTTCACTTTCA
AGACCAATGTCATGGTCTCGAACGTTGTCCGCAACGGCTCGCAGATCCTCGGTGTCCAGACGAACGACCCGACGCT
CGGCCCCAACGGTTTCATCCCCGTGACCCCGAAGGGGCGTGCATCCTCTCTGCTGGTGCATTGGCACTTCGCGCA
TTCTCTTCAAAGCGGTATTGGCCCCACGGATATGATTACAGACTGTTTCAGAGCAACCCGACCGCCGCGCGCTC
CCGCCGAGAACCAGTGGATCAACCTCCAGTCGGCATGAACGCACAGGACAACCCCTCGATCAACTGGTCTTCA
CCCACCCAGCATCGATGCCTATGAGAACTGGGCTGACGTCTGGAGCAACCCGCGCCGGCTGACGCTGCACAGTA
CCTCGGAACCAGTCCGGTGTCTTCGCAGGTGCTTCTCCAAACTCAACTTCTGGCGGCATACTCTGGTTCGGATG
GCTTTACCCGTTATGCCAGGGGACGGTGCGCCGGGCGCAGCCTCCGTGAACTCCTCGCTGCCGTACAACGCGAG
CCAGATCTTACGATCACCGTGTACCTCTACGGGCATCCAGTCGCGTGGGCGCATCGGCATCGATGCAGCGCTCC
GCGGTACGGTGCTCACACCGCCGTGGCTCGTGAATCCGGTTCGACAAGACCGTGCTCTCTGCAGGCGCTGCACGACGT
CGTCTCGAACATAGGGTCGATTCCCGCCTGACGATGATCACGCCGACGTCACGCAGACACTCGAGGAGTACGTC
GATGCGTACGACCCCGGACGATGAACTCGAACCACTGGGTCTCGTCCAGACGATCGGCTCATCTCCCCAGAGCG
CGGTAGTCGATTCGAACGTCAAGGTCTTGGCACGAACAACCTGTTTATCGTCGACGCAGGTATCATTCCCCACCTG
CCCACGGGAACCCCGAGGACGCTCATGTCTGCCCGGAGCAGGCGGCCGGAAGATCCTCGCGCTTGGCGGA
GGTCCTTGA
```