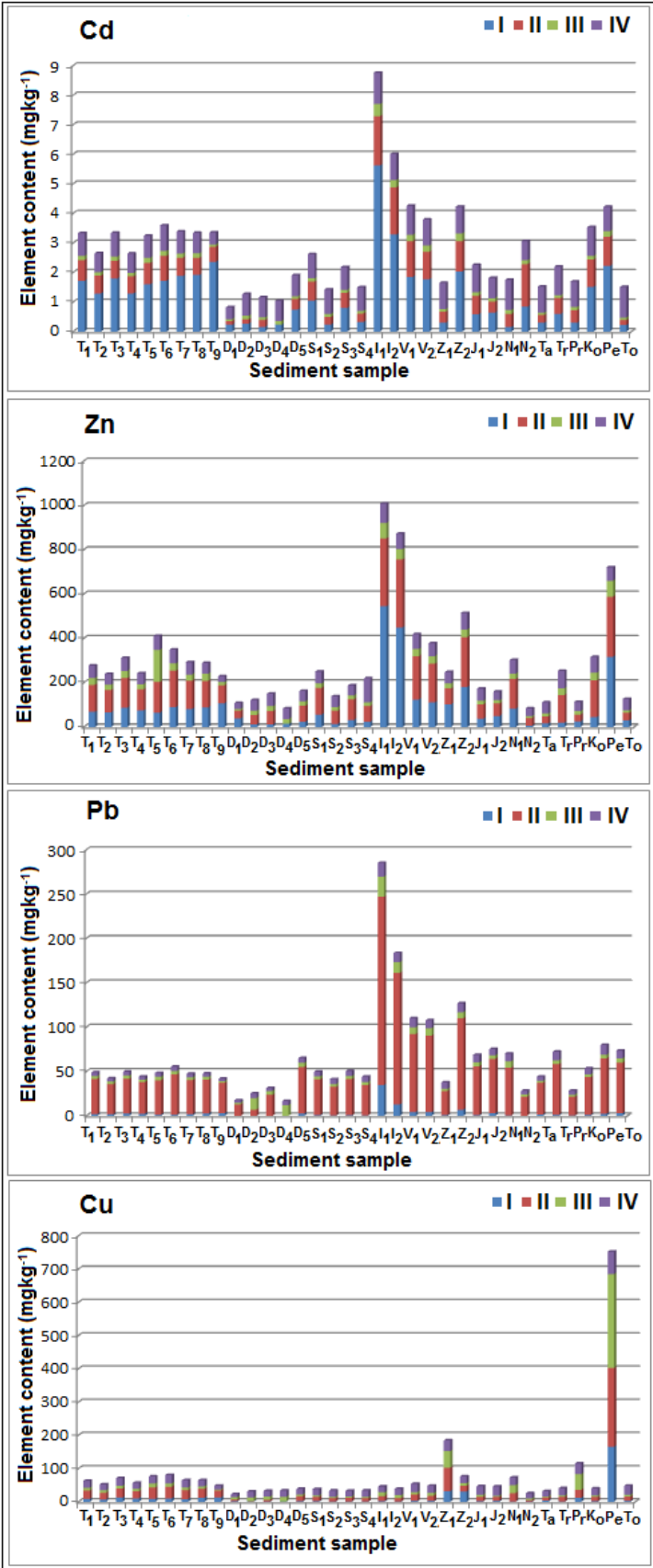


Supplementary material for the article:

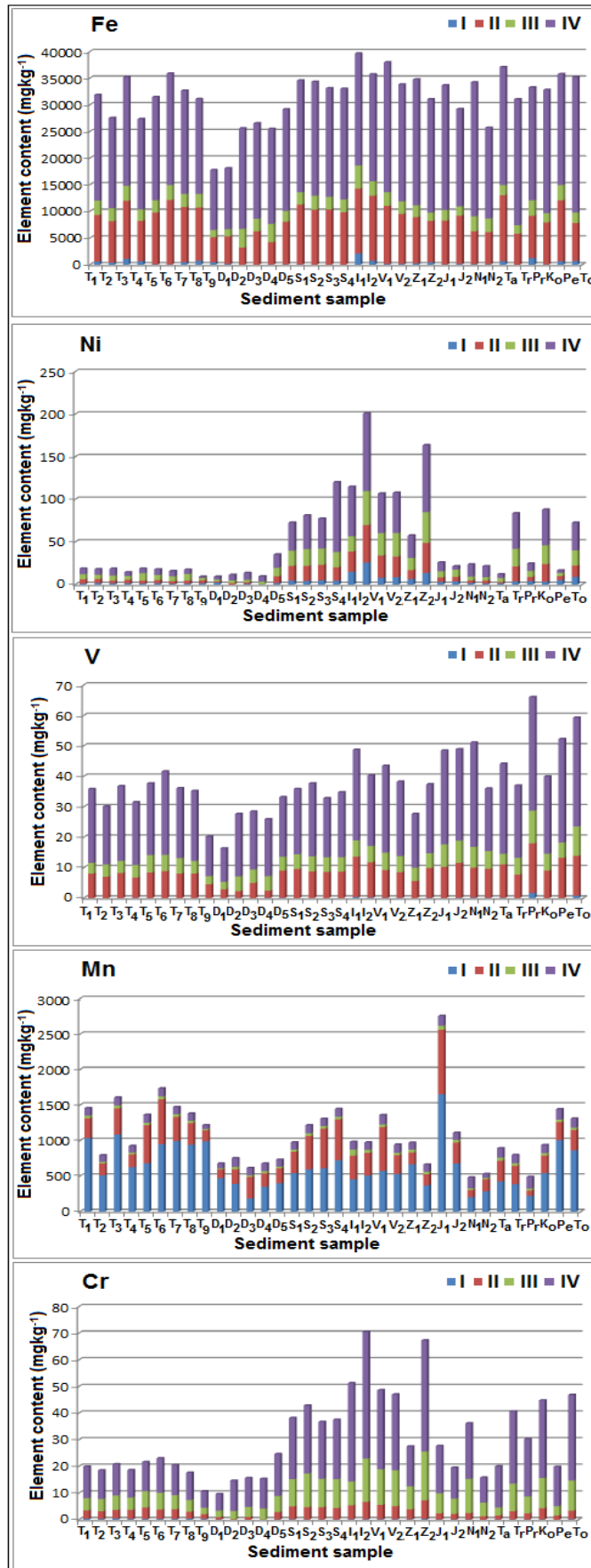
Sakan, S.; Popović, A.; Anđelković, I.; Đorđević, D. Aquatic Sediments Pollution Estimate Using the Metal Fractionation, Secondary Phase Enrichment Factor Calculation, and Used Statistical Methods. *Environmental Geochemistry and Health* **2016**, *38* (3), 855–867.

<https://doi.org/10.1007/s10653-015-9766-0>

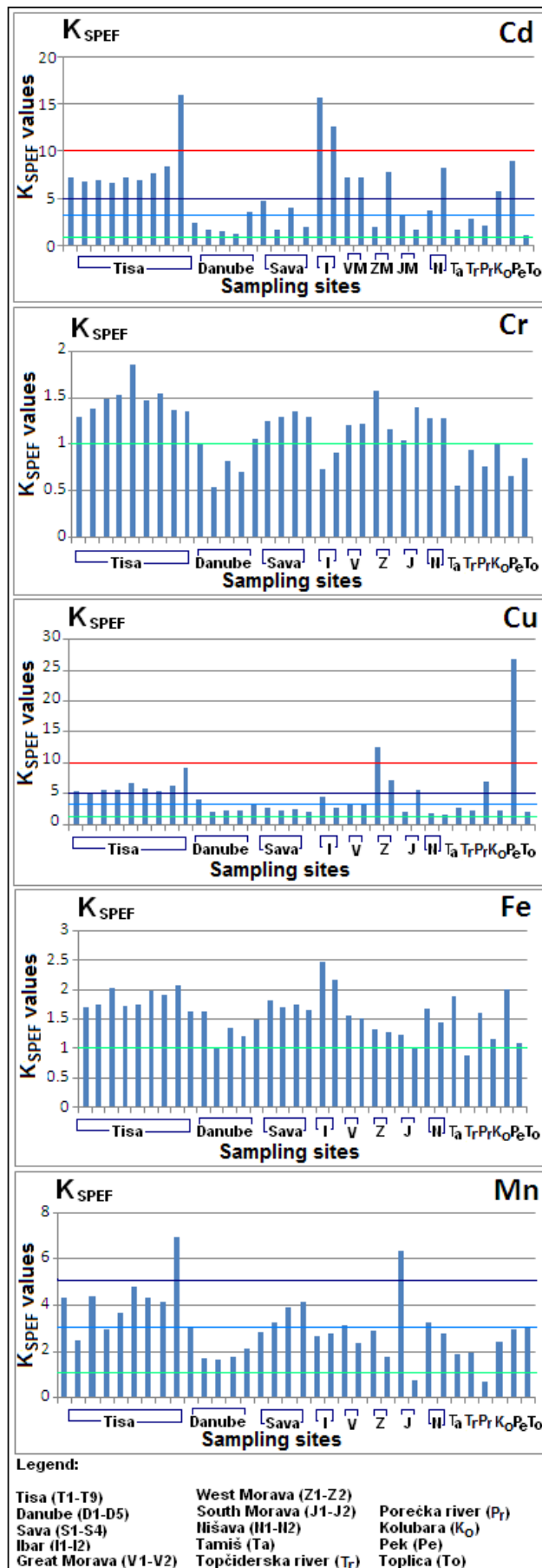
Supplementary Figures



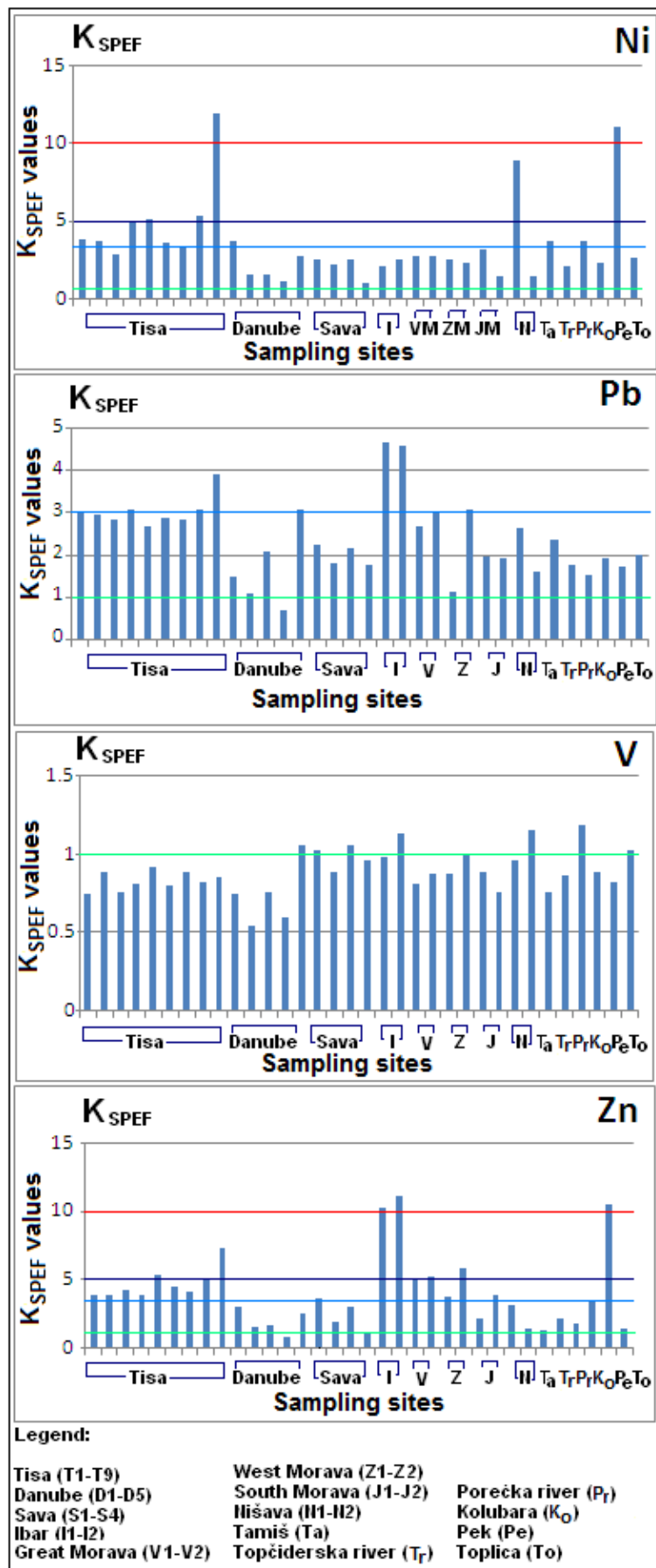
Supplementary Fig. 1-part 1. The distribution of element content (Cd, Zn, Pb, and Cu) by fractions in the different river sediment. Explanation: along the X-axis are shown sediment sample; along the Y-axis is shown the contents of extracted element in each fraction, expressed in mg kg⁻¹.



Supplementary Fig. 1-part 2. The distribution of element content (Fe, Ni, V, Mn, and Cr) by fractions in the different river sediment. Explanation: along the X-axis are shown sediment sample; along the Y-axis is shown the contents of extracted element in each fraction, expressed in mg kg⁻¹.



Supplementary Fig. 2-part 1. Secondary enrichment factor (K_{SPEF}) in the studied sediments.



Supplementary Fig. 2-part 2. Secondary enrichment factor (K_{SPEF}) in the studied sediments.