

Supplementary data for article:

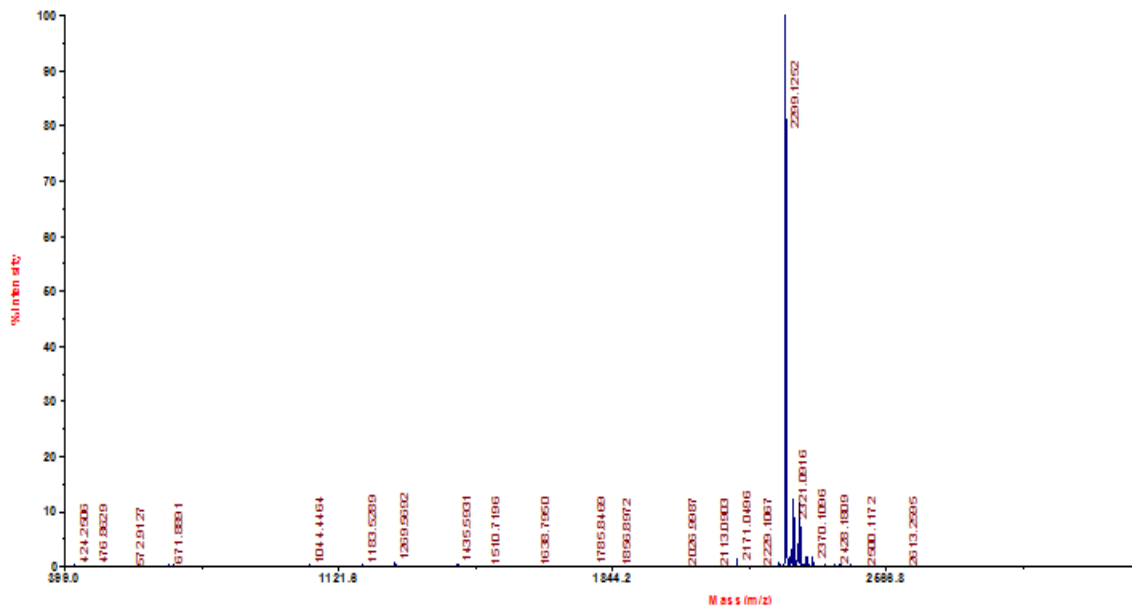
Szwej, E.; Devocelle, M.; Kenny, S.; Guzik, M.; O'Connor, S.; Nikodinović-Runić, J.; Radivojevic, J.; Maslak, V.; Byrne, A. T.; Gallagher, W. M.; et al. The Chain Length of Biologically Produced (R)-3-Hydroxyalkanoic Acid Affects Biological Activity and Structure of Anti-Cancer Peptides. *Journal of Biotechnology* **2015**, *204*, 7–12.

<https://doi.org/10.1016/j.jbiotec.2015.02.036>

**FIG. S2.** Mass spectrometry (MALDI-TOF MS) of peptides and derivatives conjugated with (*R*)-3-hydroxyalkanoic acids.

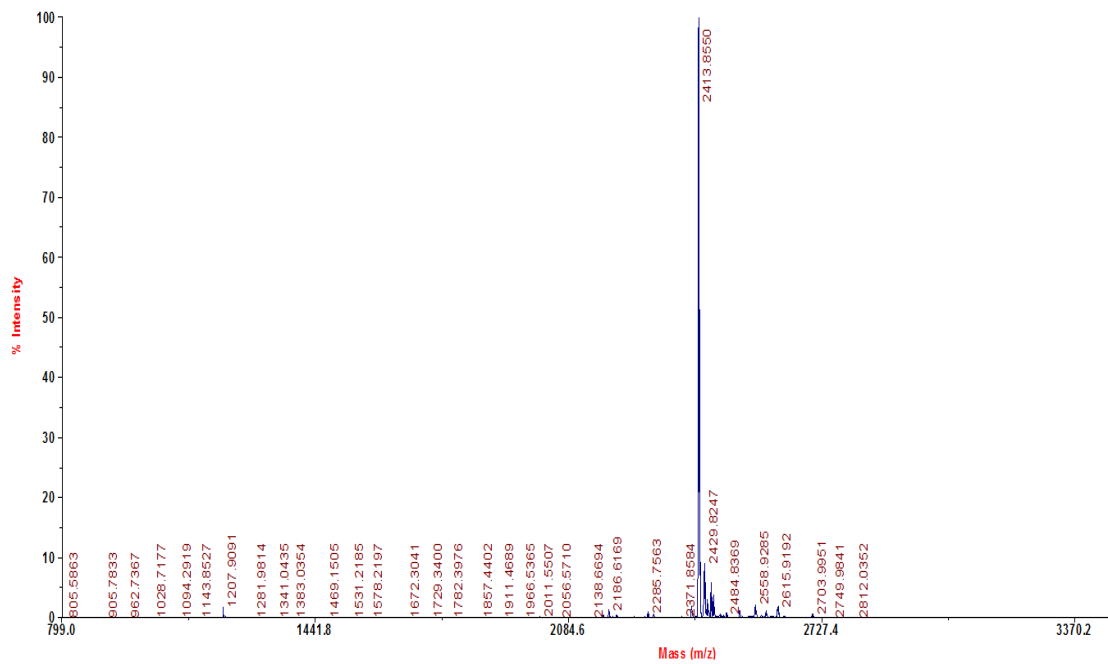
MALDI-TOF mass spectrometry of DP18L peptide:

TOF/TOF™ Reflectr Spec #1 MC[BP = 2300.1, 13233]

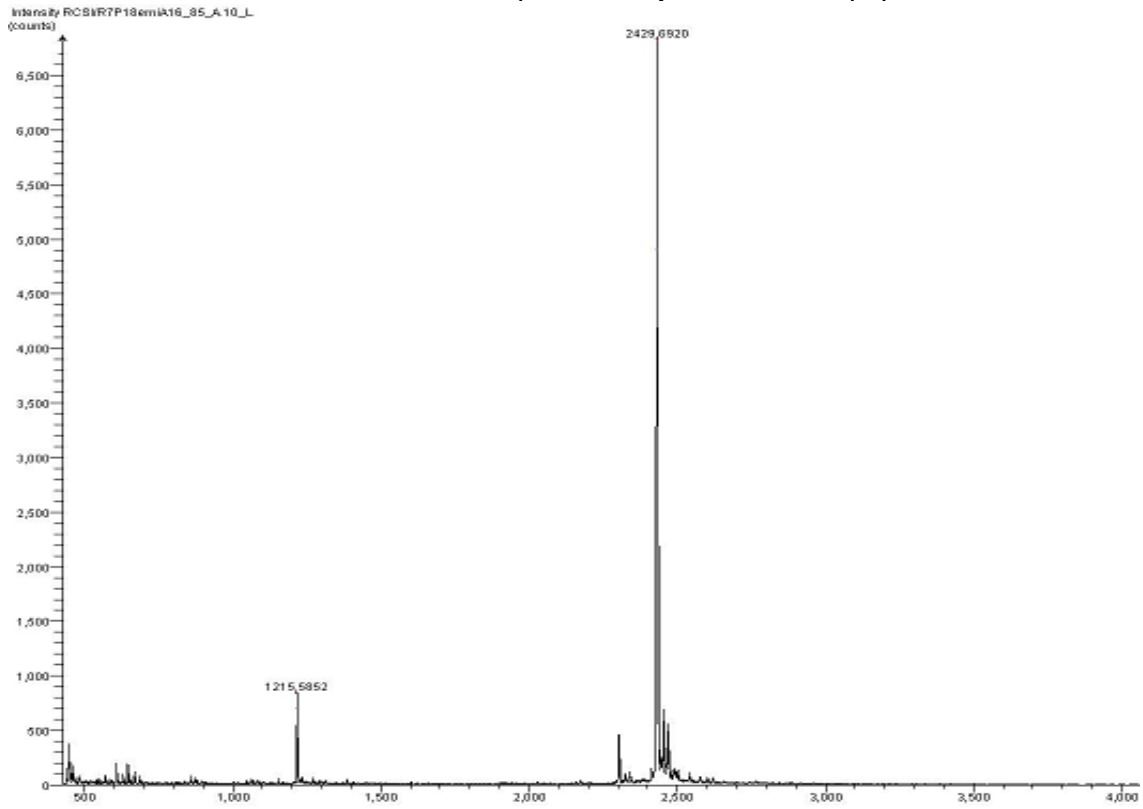


MALDI-TOF mass spectrometry of R6DP18L peptide:

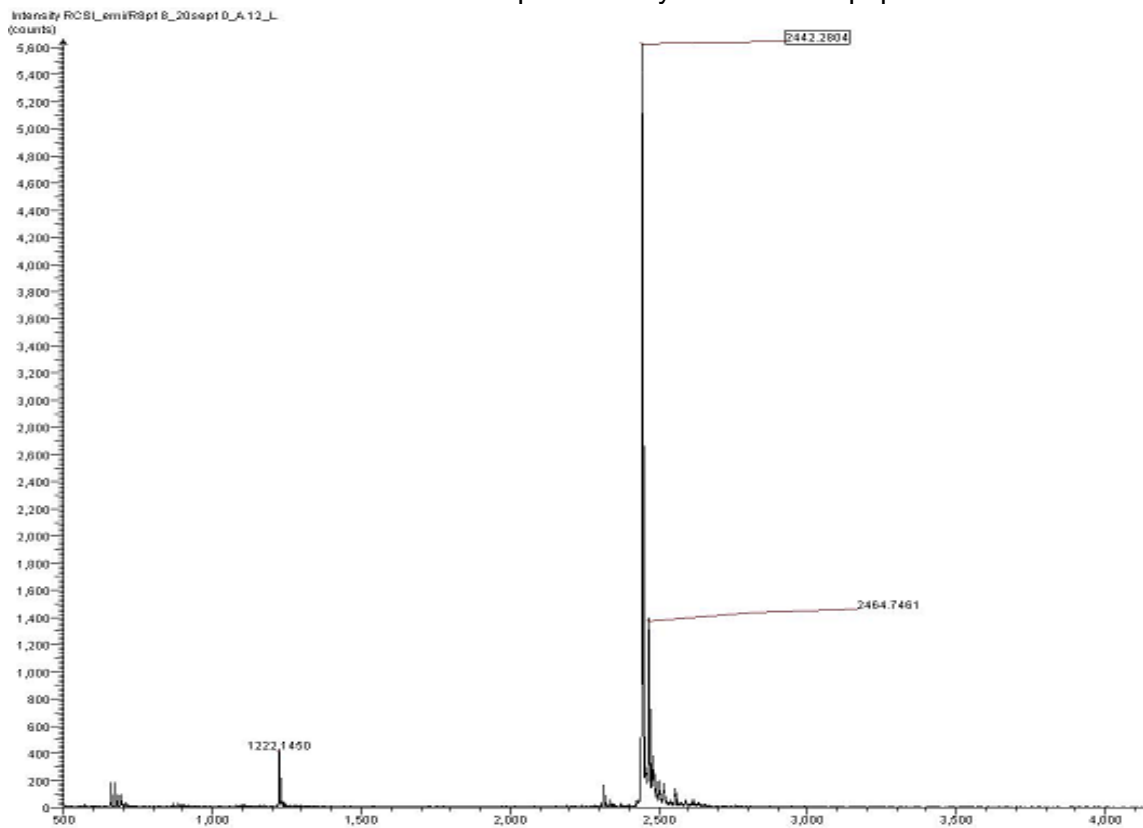
TOF/TOF™ Reflectr Spec #1 MC[BP = 2414.8, 52421]



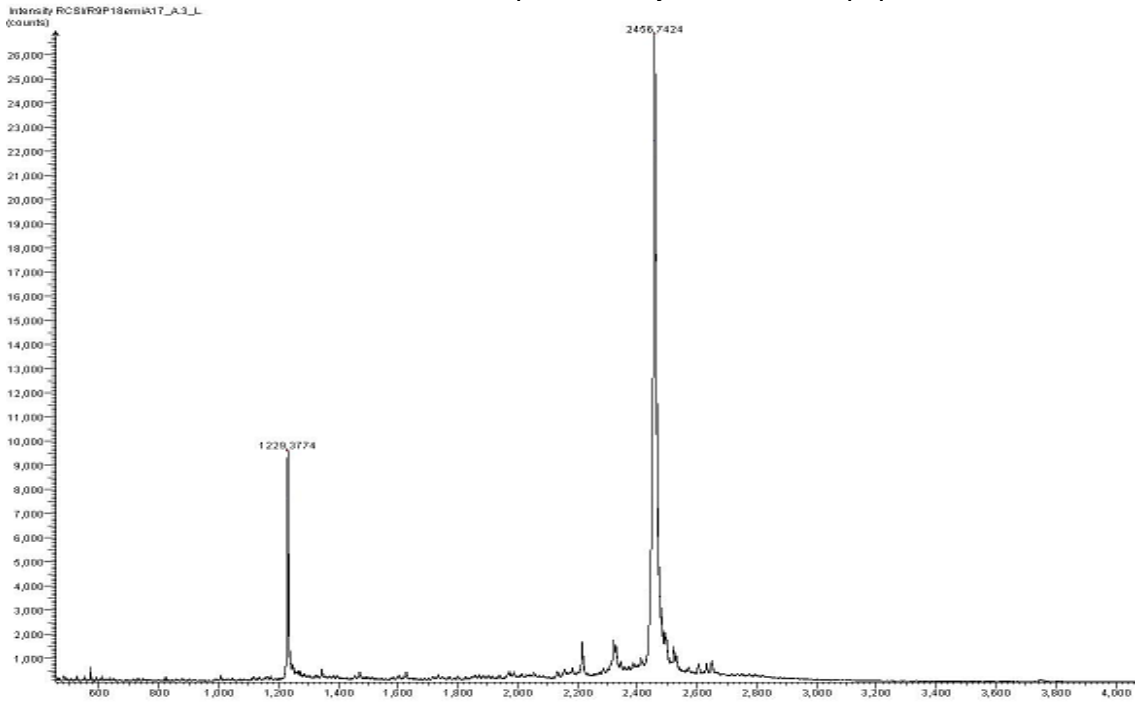
MALDI-TOF mass spectrometry of R7DP18L peptide:



MALDI-TOF mass spectrometry of R8DP18L peptide:

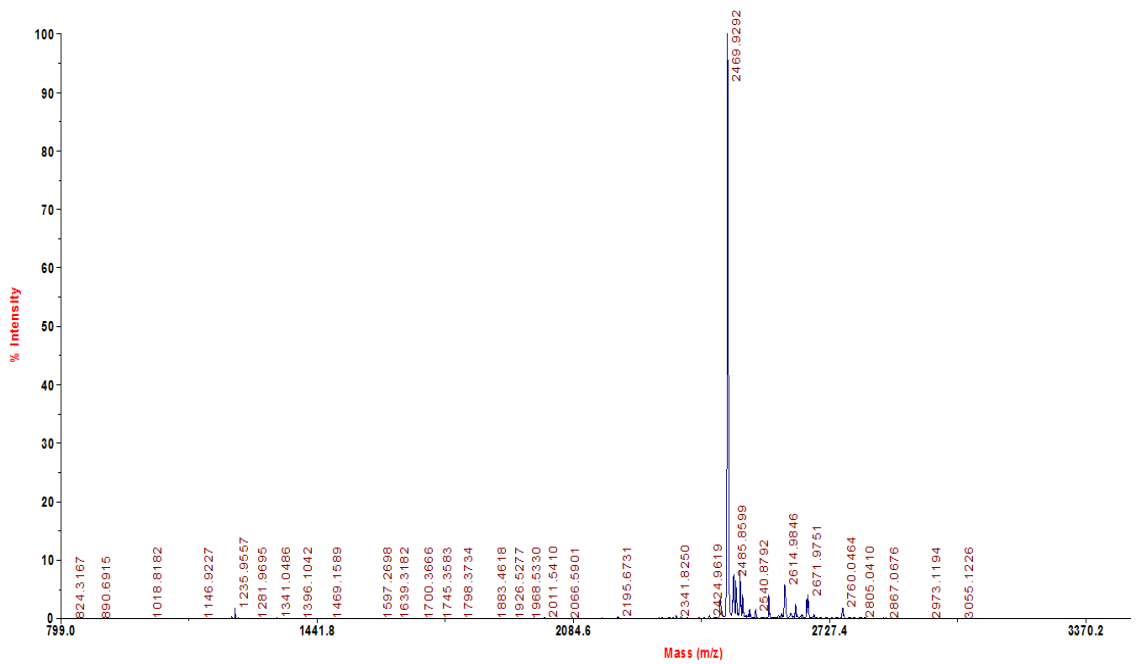


### MALDI-TOF mass spectrometry of R9DP18L peptide:

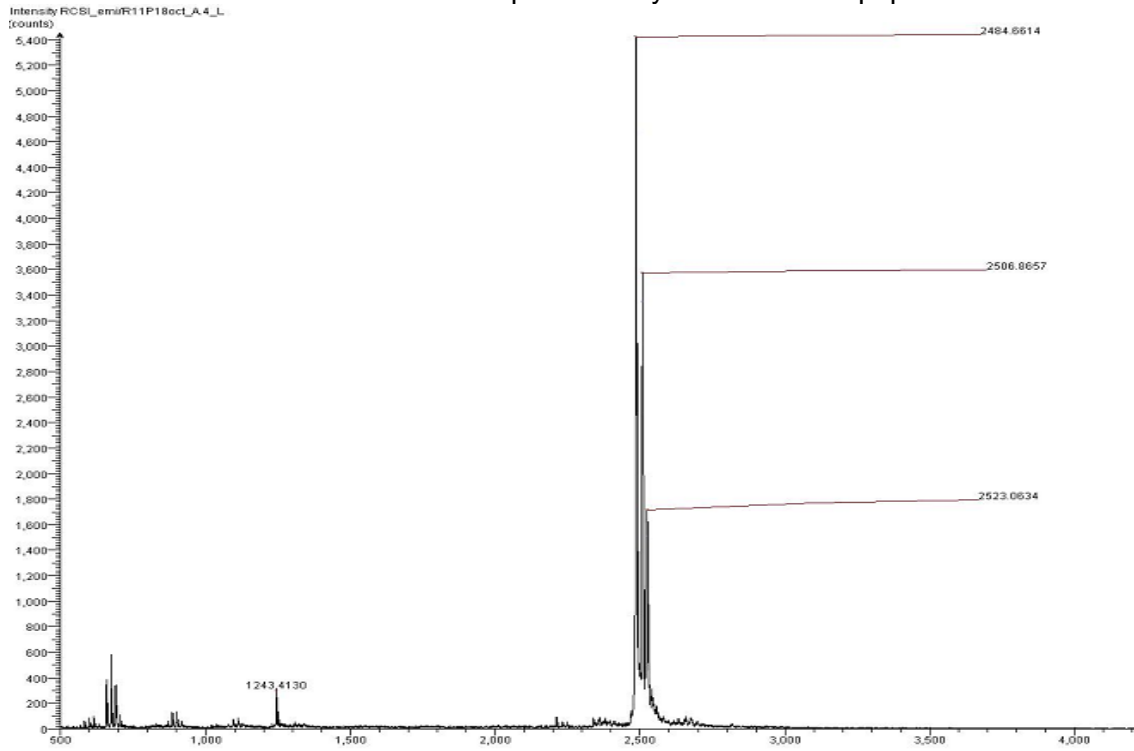


### MALDI-TOF mass spectrometry of R10DP18L peptide:

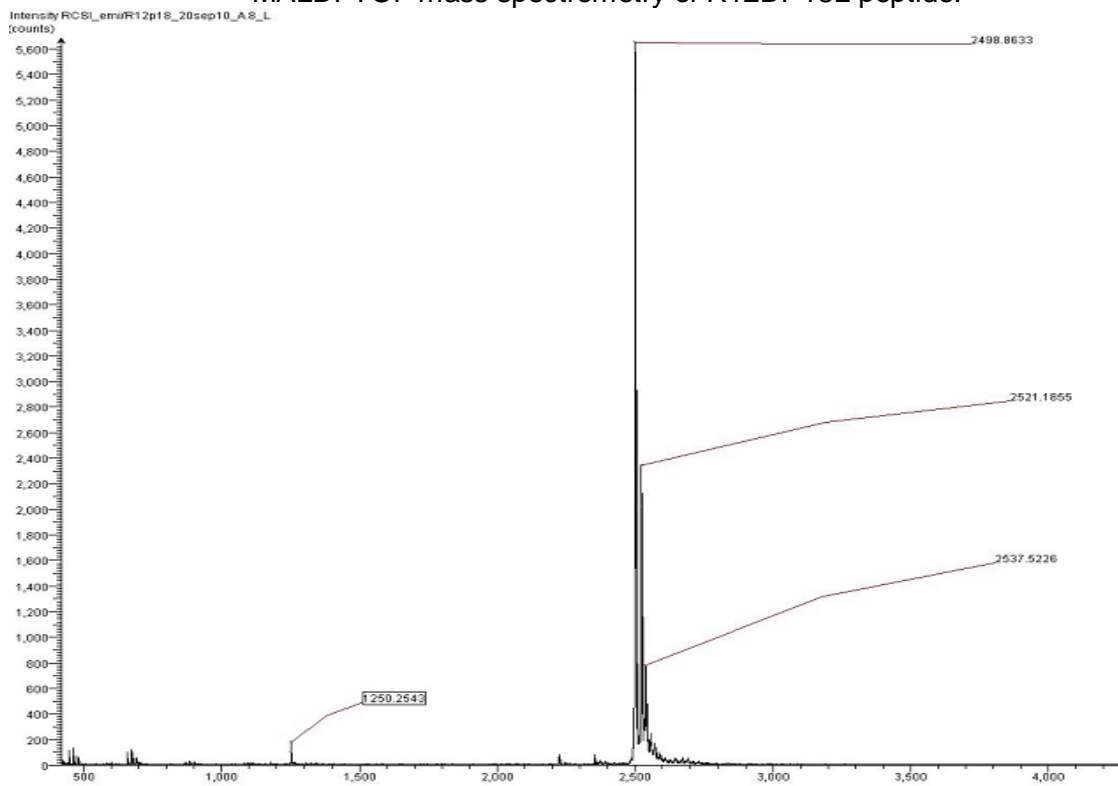
TOF TOF™ Reflector Spec#1 MC[BP = 2470.8, 71679]



### MALDI-TOF mass spectrometry of R11DP18L peptide:

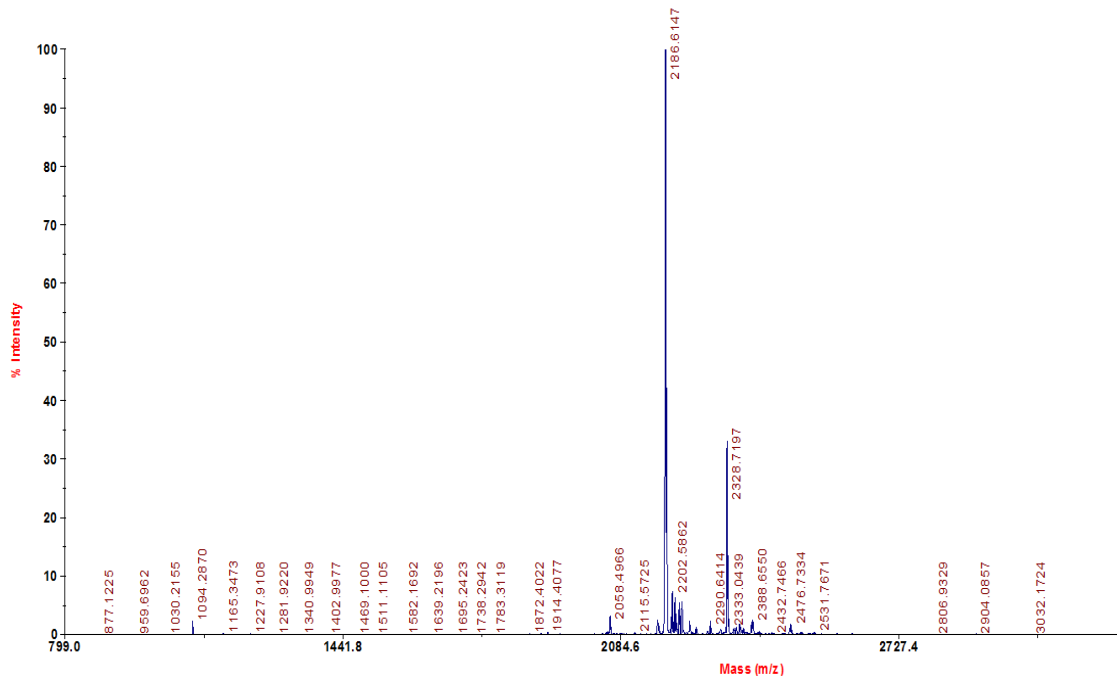


### MALDI-TOF mass spectrometry of R12DP18L peptide:



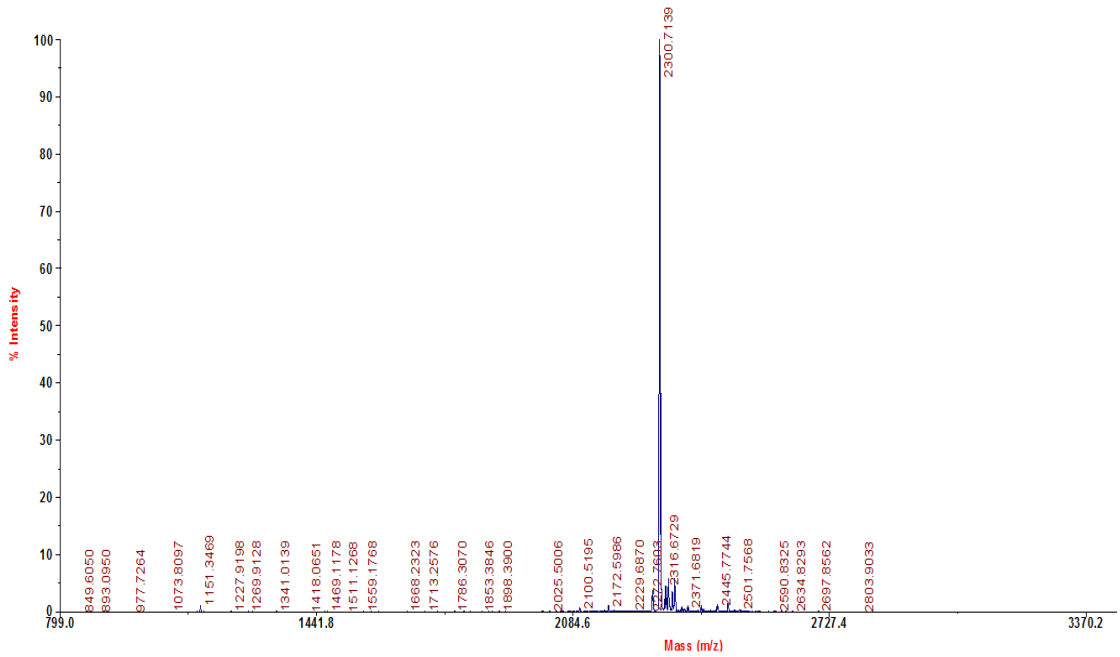
### MALDI-TOF mass spectrometry of DP17L peptide:

TOF/TOF™ Reflector Spec#1 MC[BP = 2187.6, 64863]



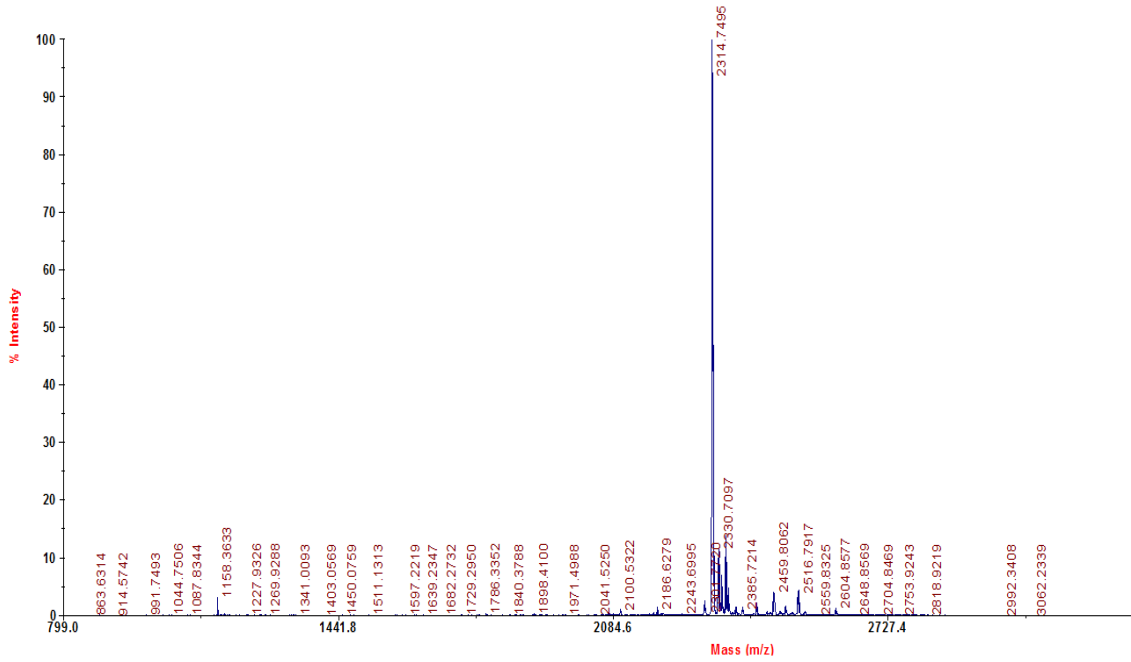
### MALDI-TOF mass spectrometry of R6DP17L peptide:

TOF/TOF™ Reflector Spec#1 MC[BP = 2301.7, 55247]



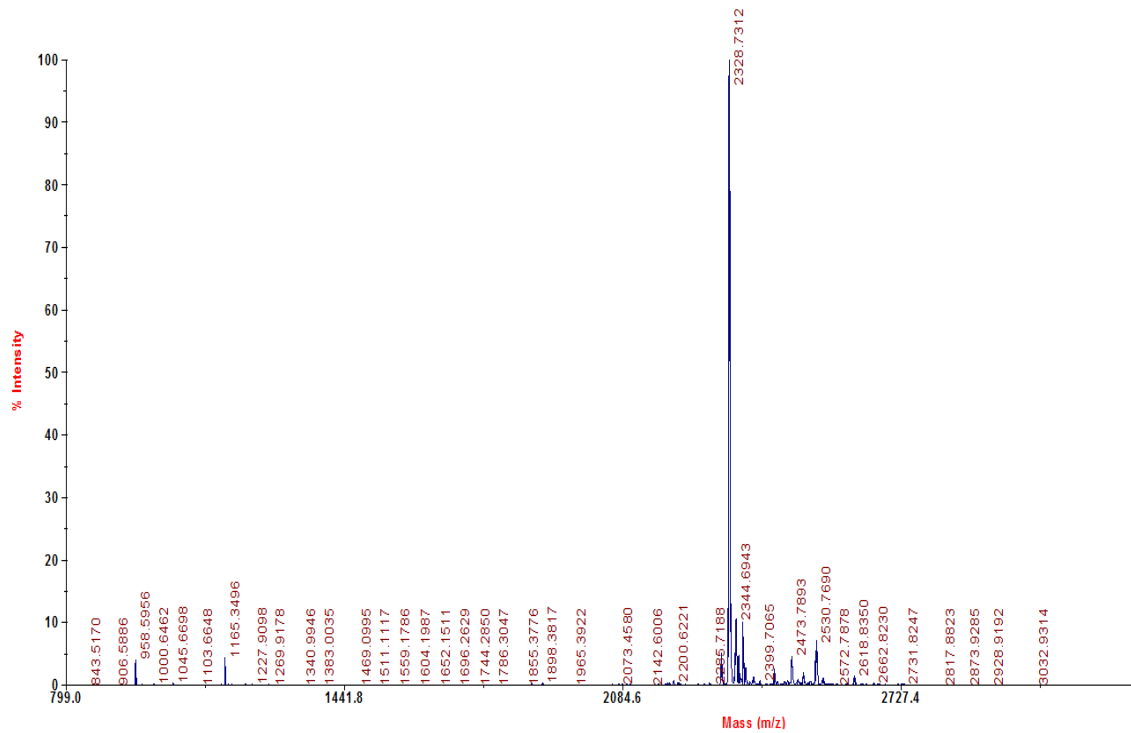
### MALDI-TOF mass spectrometry of R7DP17L peptide:

TOF/TOF™ Reflector Spec #1 MC[BP = 2315.7, 75953]



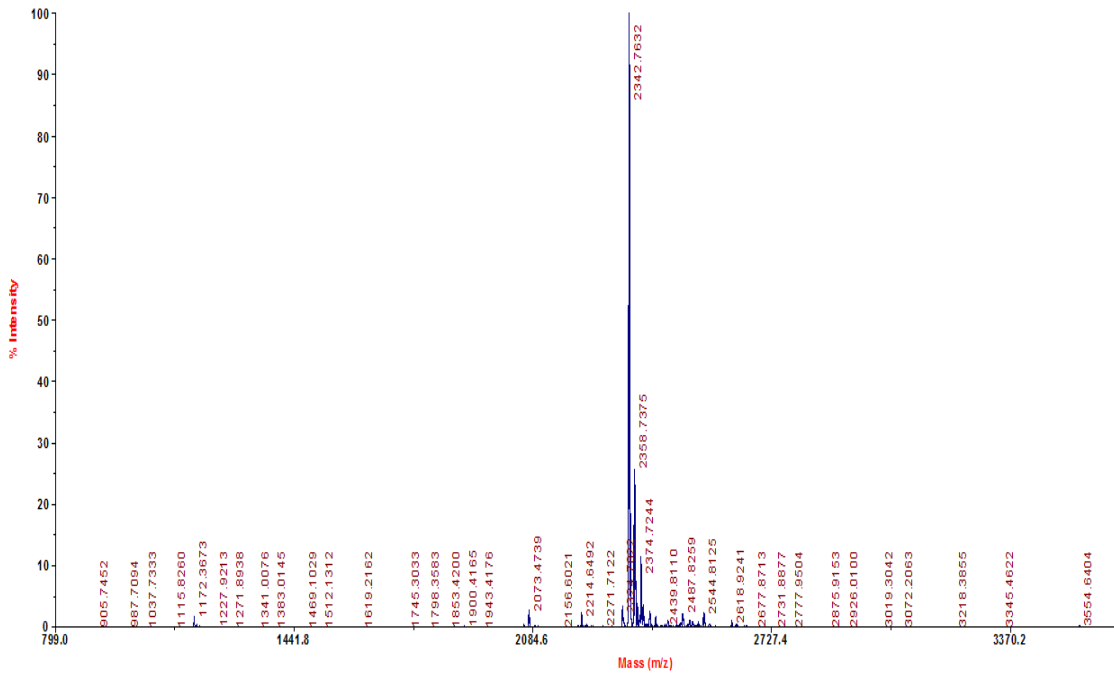
### MALDI-TOF mass spectrometry of R8DP17L peptide:

TOF/TOF™ Reflector Spec #1 MC[BP = 2329.7, 86747]

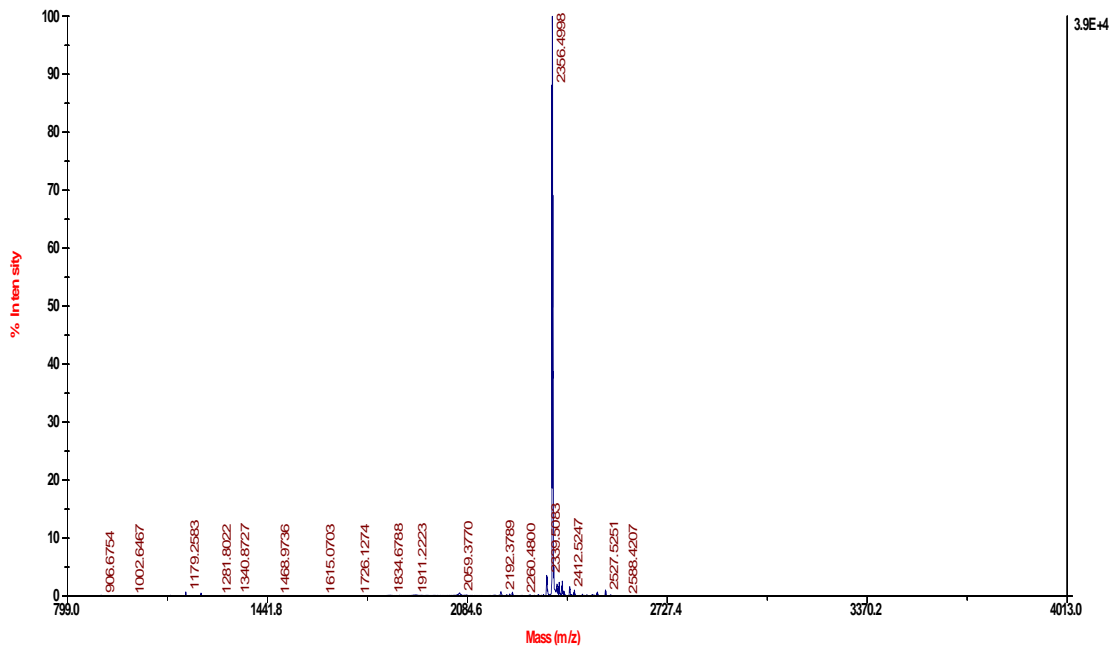


### MALDI-TOF mass spectrometry of R9DP17L peptide:

TOF/TOF™ Reflector Spec #1 [MC[BP = 2343.8, 57331]]



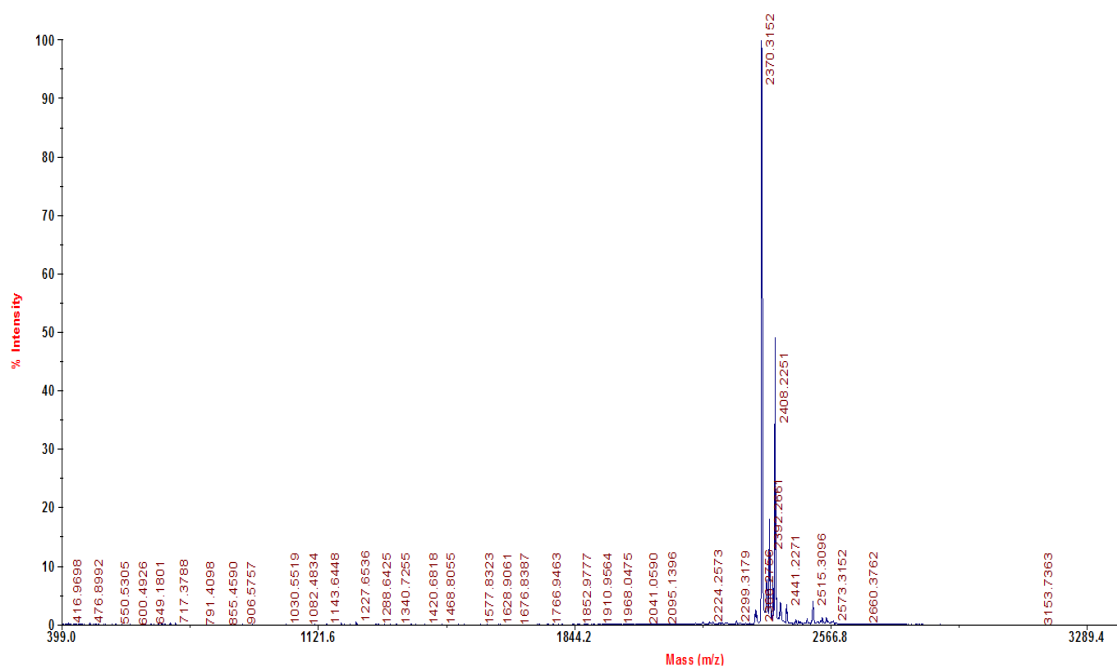
### MALDI-TOF mass spectrometry of R10DP17L peptide:



### MALDI-TOF mass spectrometry of R11DP17L peptide:

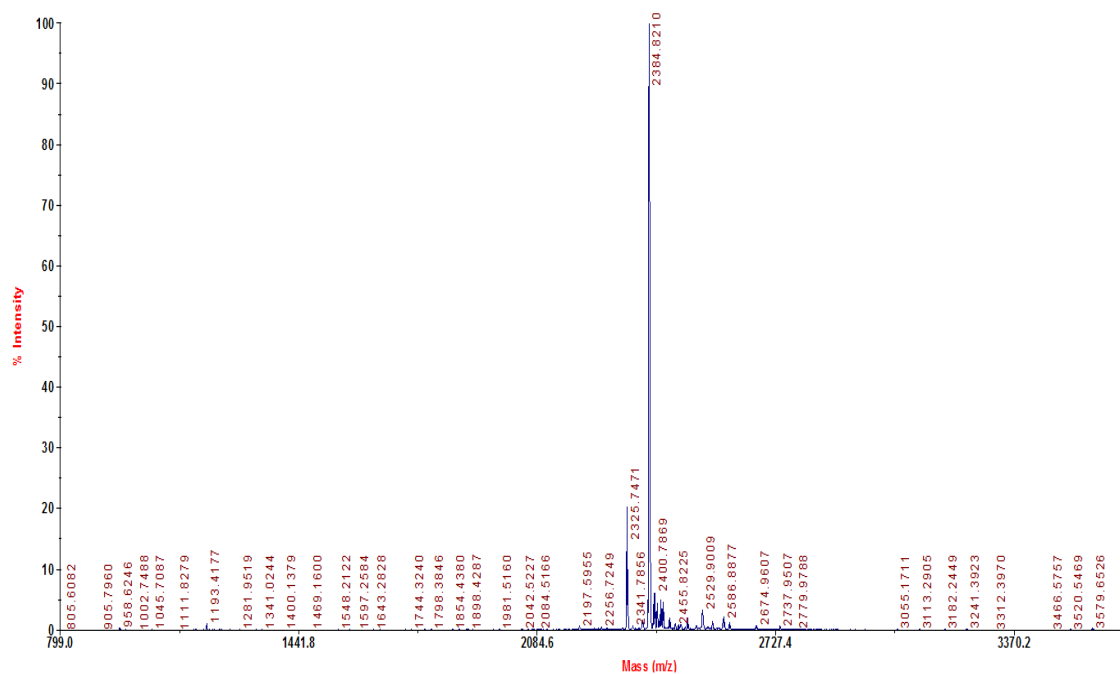


TOF/TOF™ Reflector Spec #1 MC[BP = 2371.3, 90299]



MALDI-TOF mass spectrometry of R12DP17L peptide:

TOF/TOF™ Reflector Spec #1 MC[BP = 2386.8, 63221]



MALDI-TOF mass spectrometry of CI10DP18L peptide:

