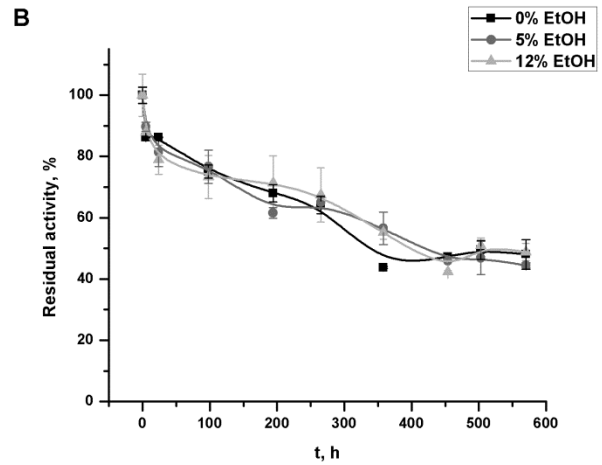
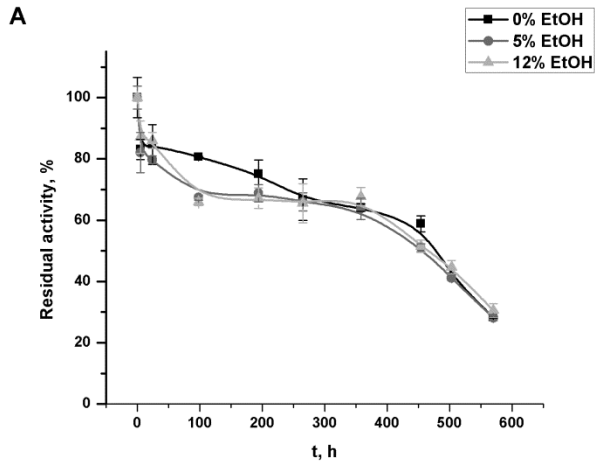


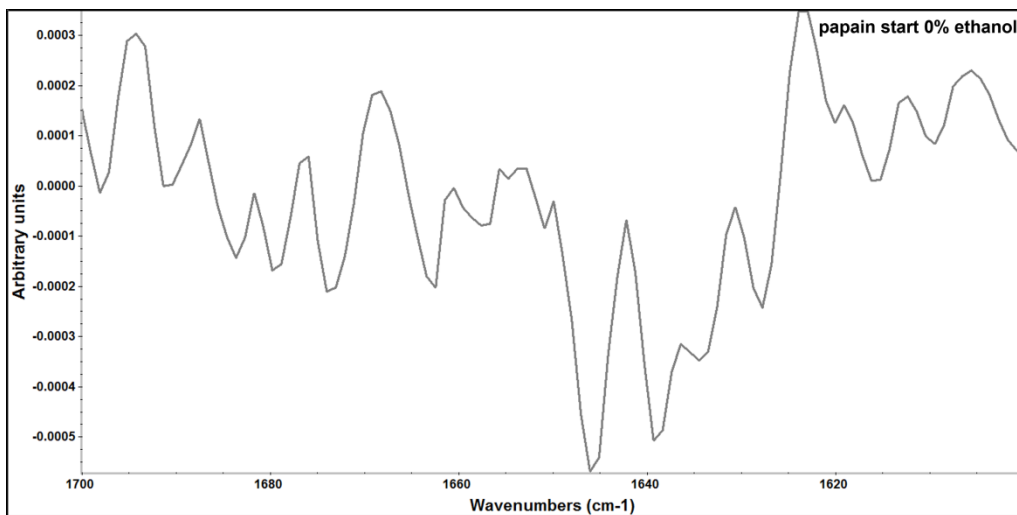
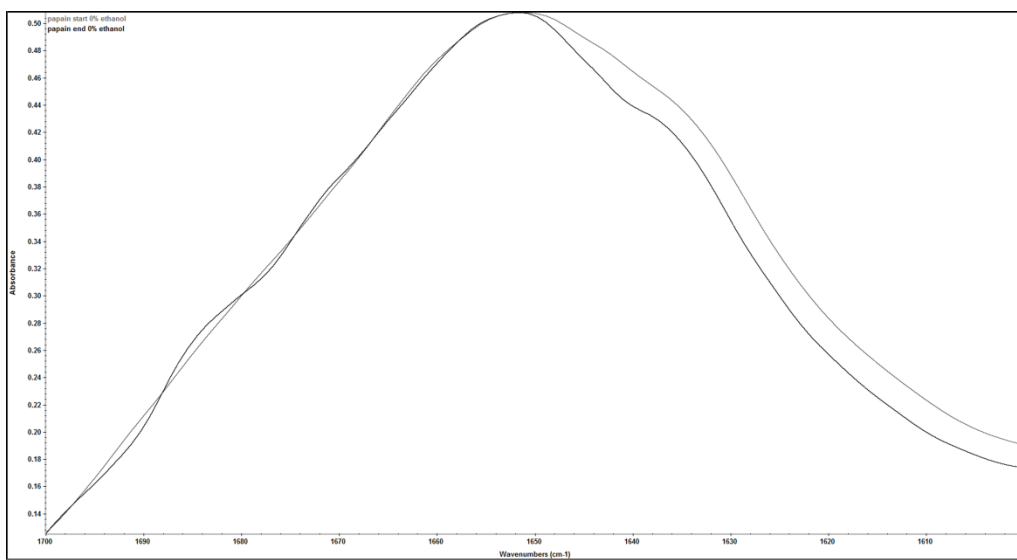
Supplementary data for the article:

Milošević, J.; Janković, B.; Prodanović, R.; Polović, N. Comparative Stability of Ficin and Papain in Acidic Conditions and the Presence of Ethanol. *Amino Acids* **2019**, *51* (5), 829–838. <https://doi.org/10.1007/s00726-019-02724-3>.

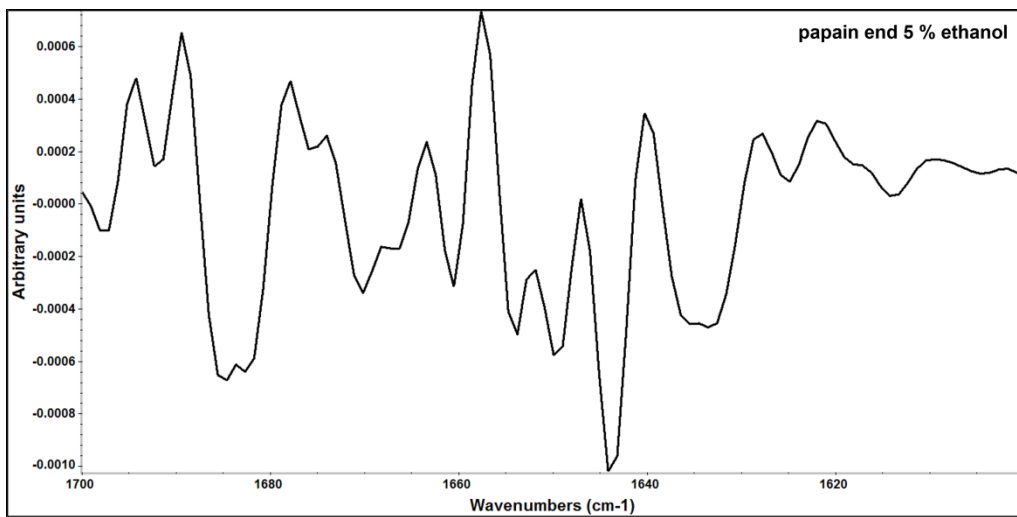
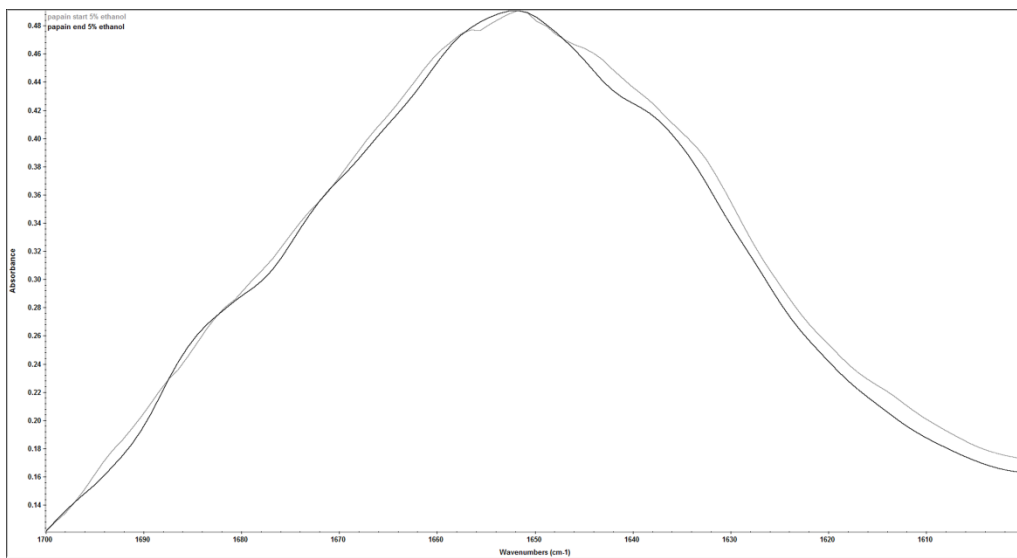
**Supplementary figure S1.** Residual activity of papain (A) and ficin (B) during incubation at 4°C in 50 mM tartaric buffer pH 3.2 containing wine matrix compounds with 0, 5 and 12% of ethanol. Each value given is the average of the results of three independent experiments, and the error bars show the standard deviations.



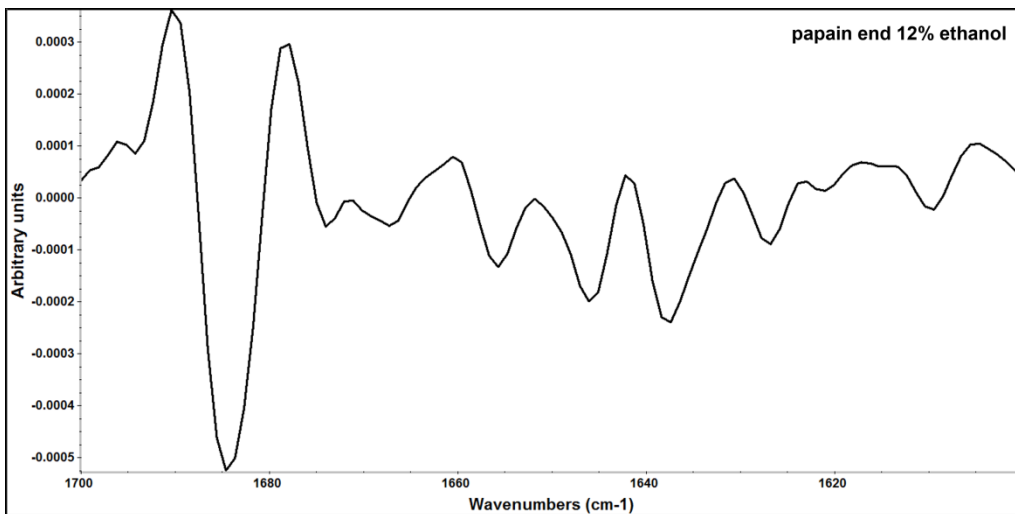
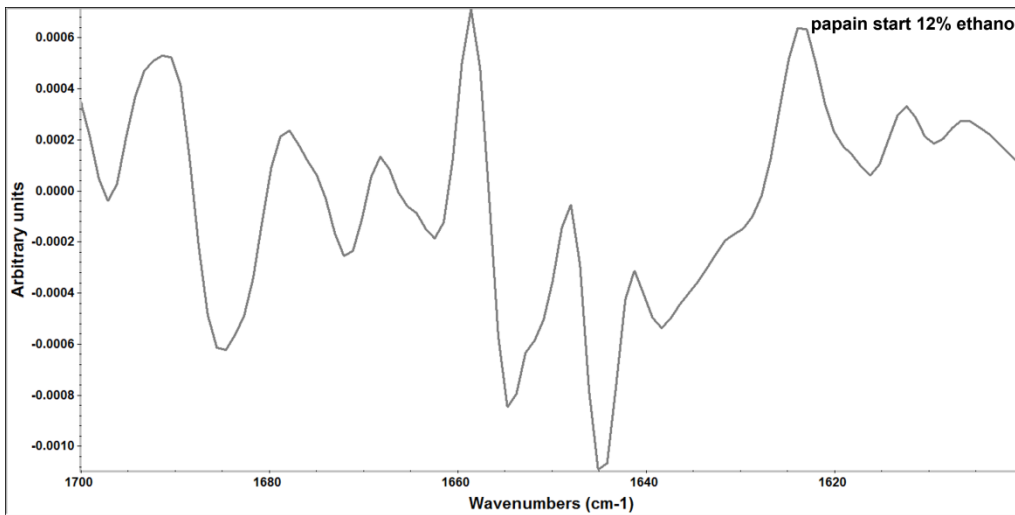
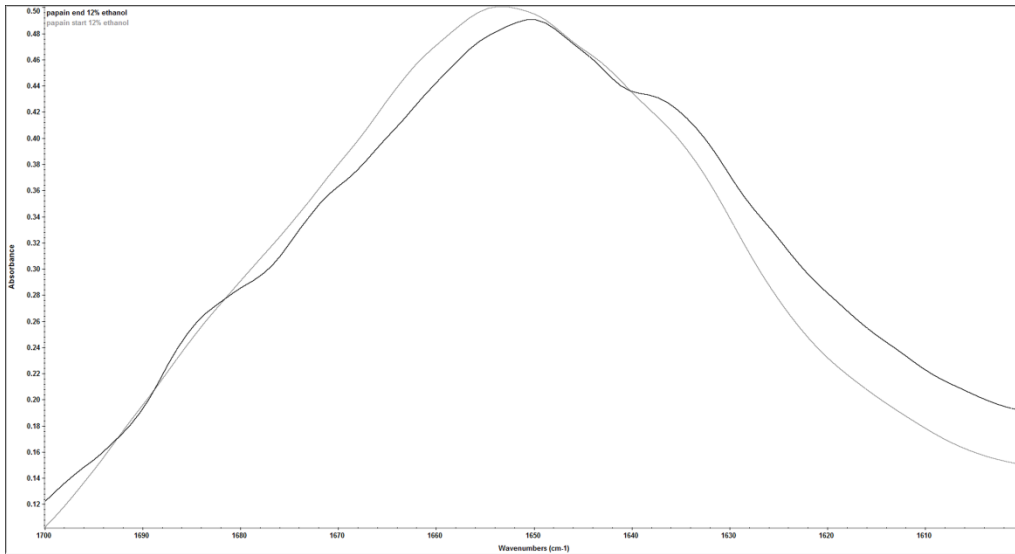
**Supplementary figure S2.** Amide I region and second derivatives of FTIR spectra of papain in Na-tartaric buffer pH 3.2 without ethanol at the beginning (gray line) and at the end of 3-week cold storage (black line).



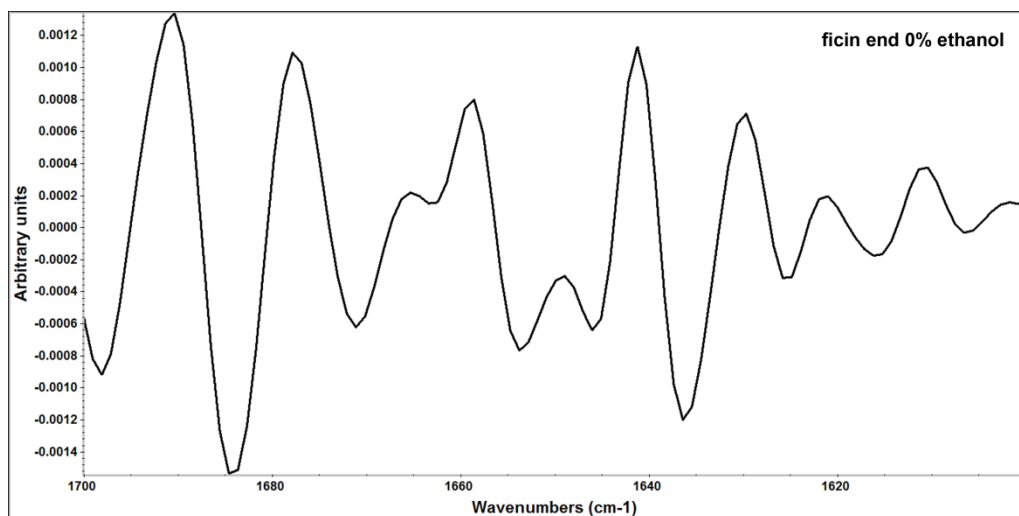
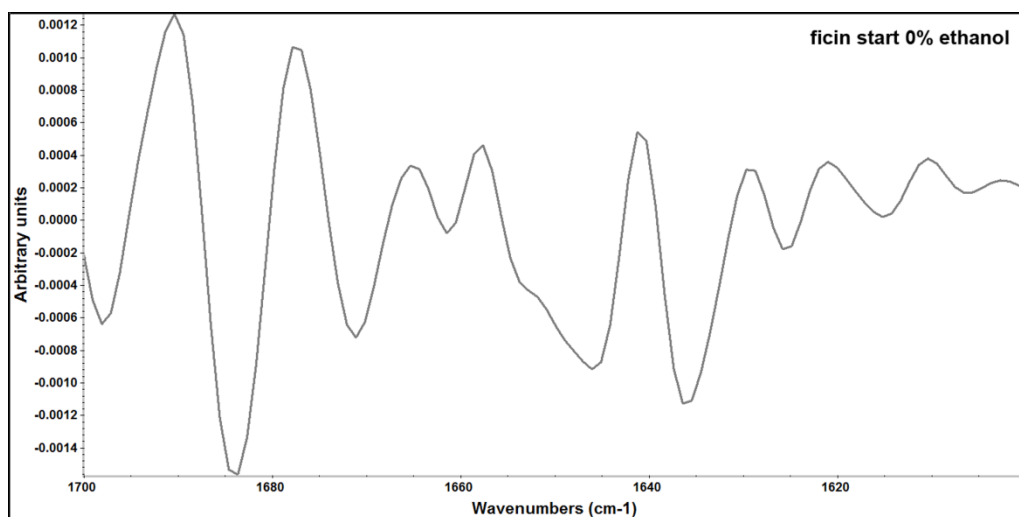
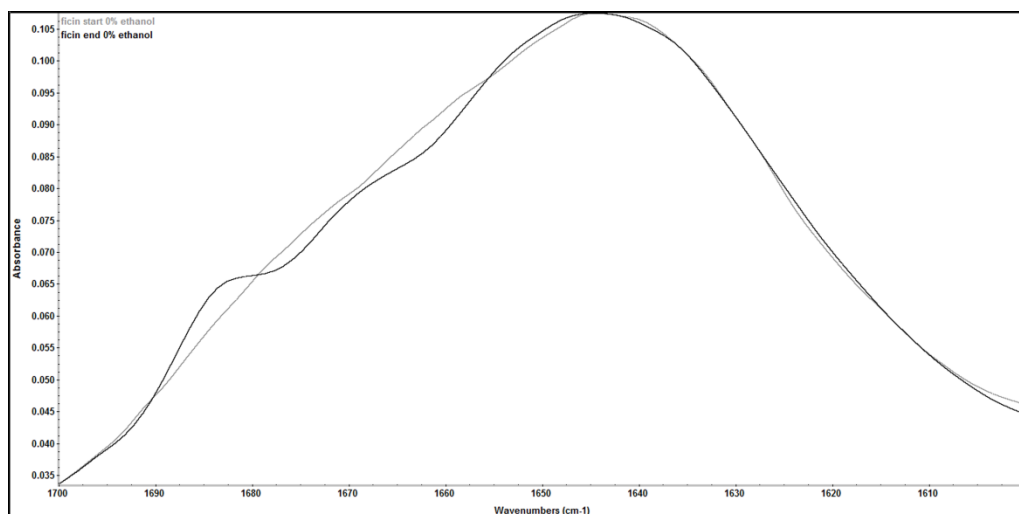
**Supplementary figure S3.** Amide I region and second derivatives of FTIR spectra of papain in Na-tartaric buffer pH 3.2 with 5% ethanol at the beginning (gray line) and at the end of 3-week cold storage (black line).



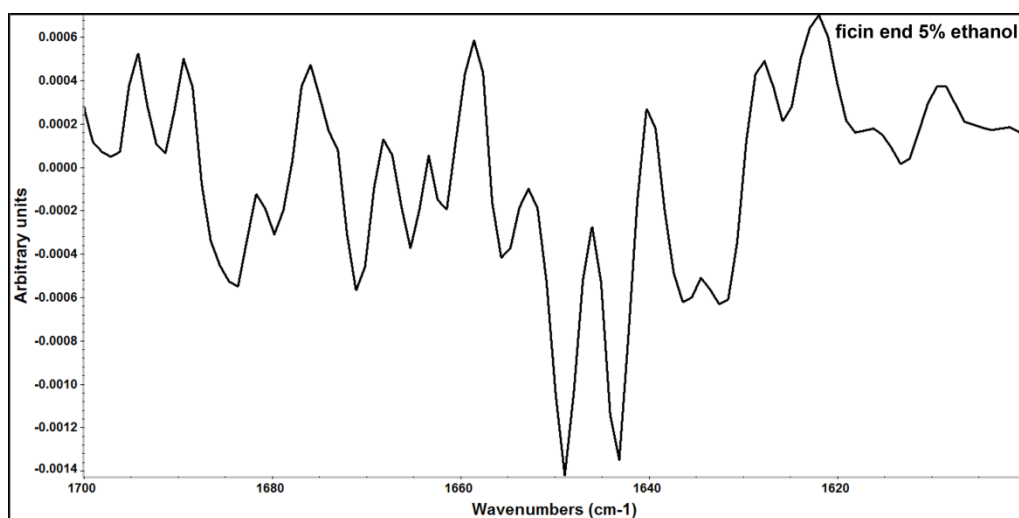
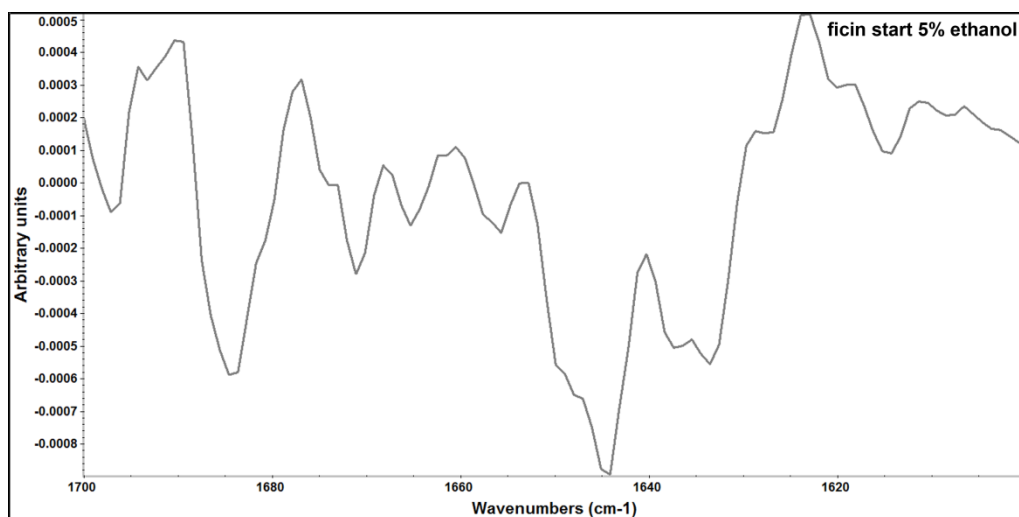
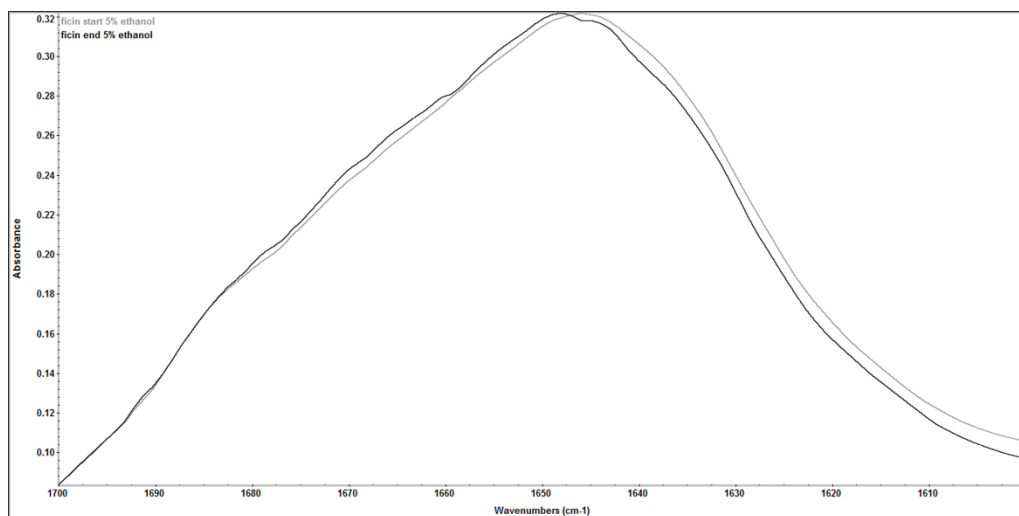
**Supplementary figure S4.** Amide I region and second derivatives of FTIR spectra of papain in Na-tartaric buffer pH 3.2 with 12% ethanol at the beginning (gray line) and at the end of 3-week cold storage (black line).



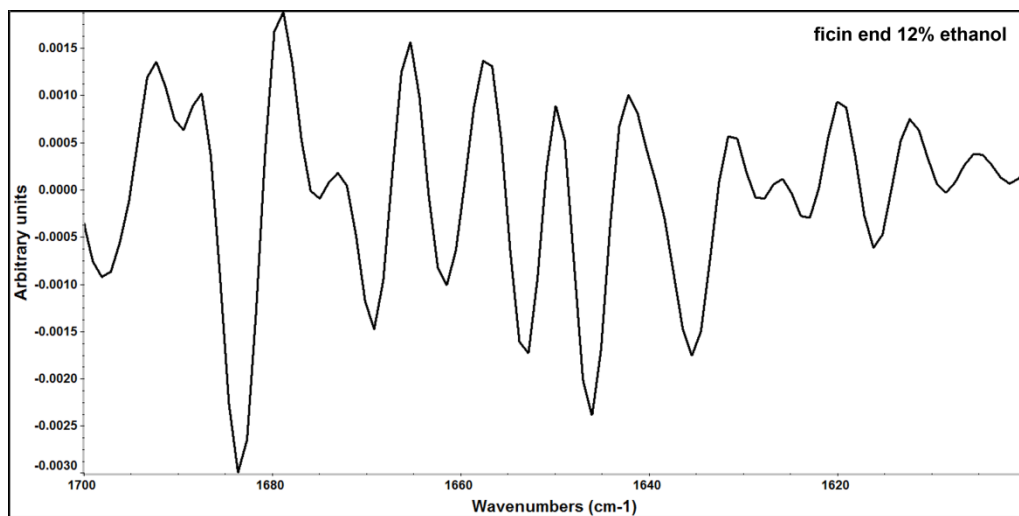
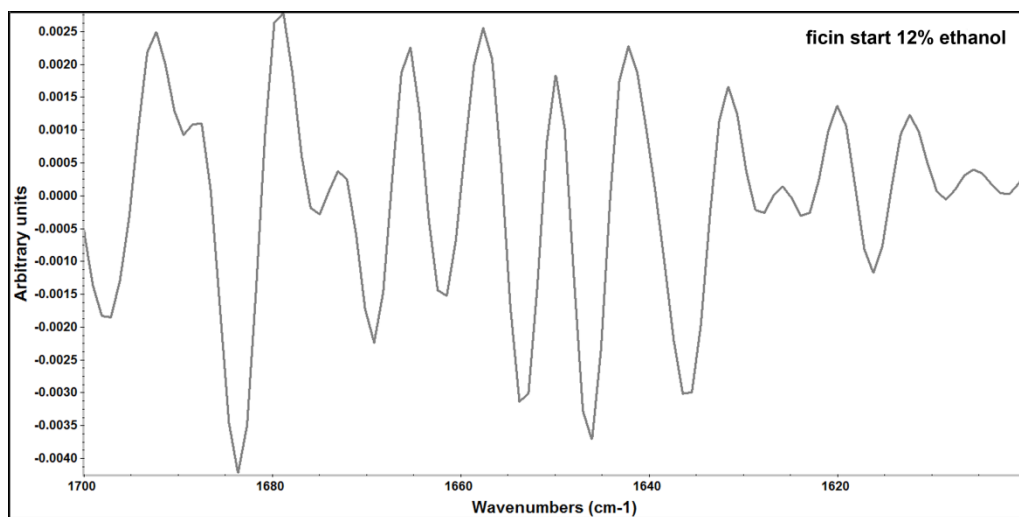
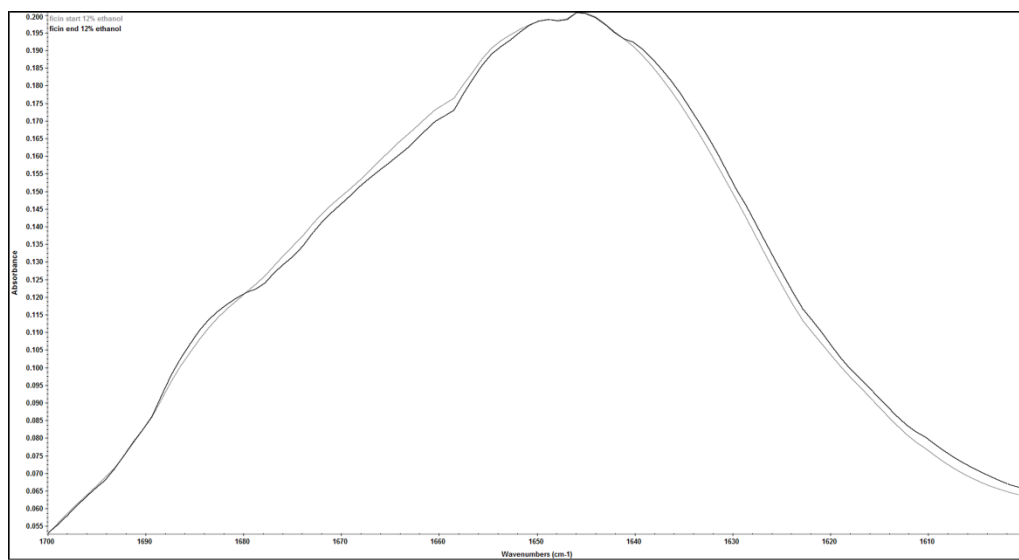
**Supplementary figure S5.** Amide I region and second derivatives of FTIR spectra of ficin in Na-tartaric buffer pH 3.2 without ethanol at the beginning (gray line) and at the end of 3-week cold storage (black line).



**Supplementary figure S6.** Amide I region and second derivatives of FTIR spectra of ficin in Na-tartaric buffer pH 3.2 with 5% ethanol at the beginning (gray line) and at the end of 3-week cold storage (black line).



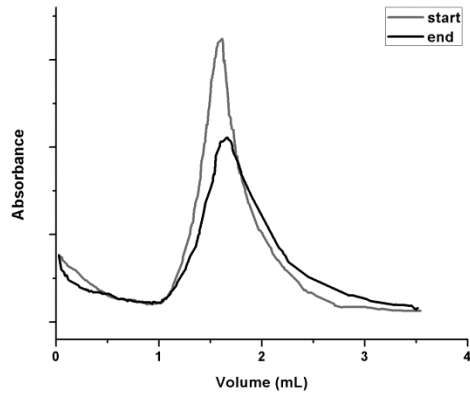
**Supplementary figure S7.** Amide I region and second derivatives of FTIR spectra of ficin in Na-tartaric buffer pH 3.2 with 12% ethanol at the beginning (gray line) and at the end of 3-week cold storage (black line).



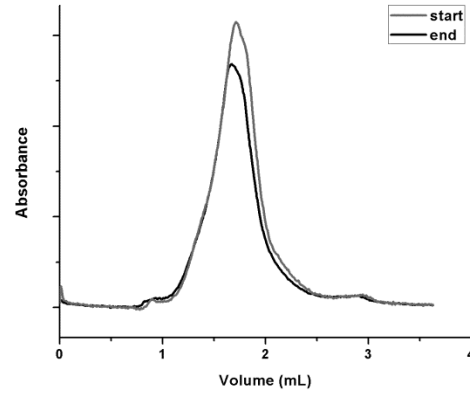


**Supplementary figure S8.** Size exclusion chromatograms of papain and ficin samples before and after cold storage in acidic-alcoholic conditions. Details given in the text.

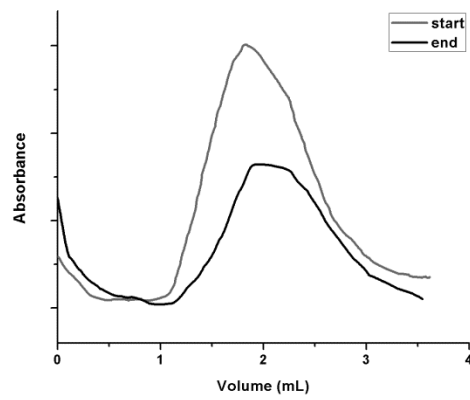
**Papain 0% ethanol**



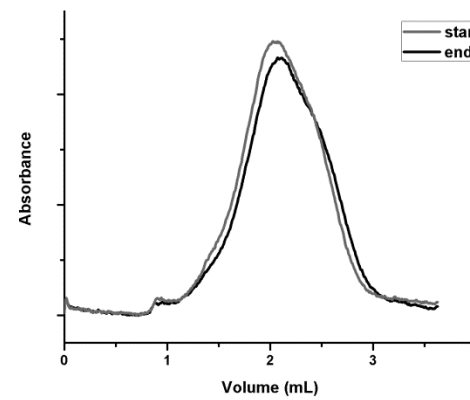
**Ficin 0% ethanol**



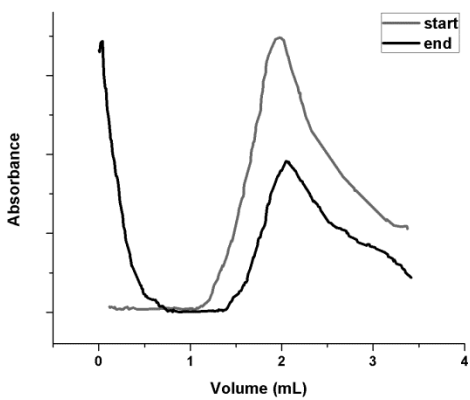
**Papain 5% ethanol**



**Ficin 5% ethanol**



**Papain 12% ethanol**



**Ficin 12% ethanol**

